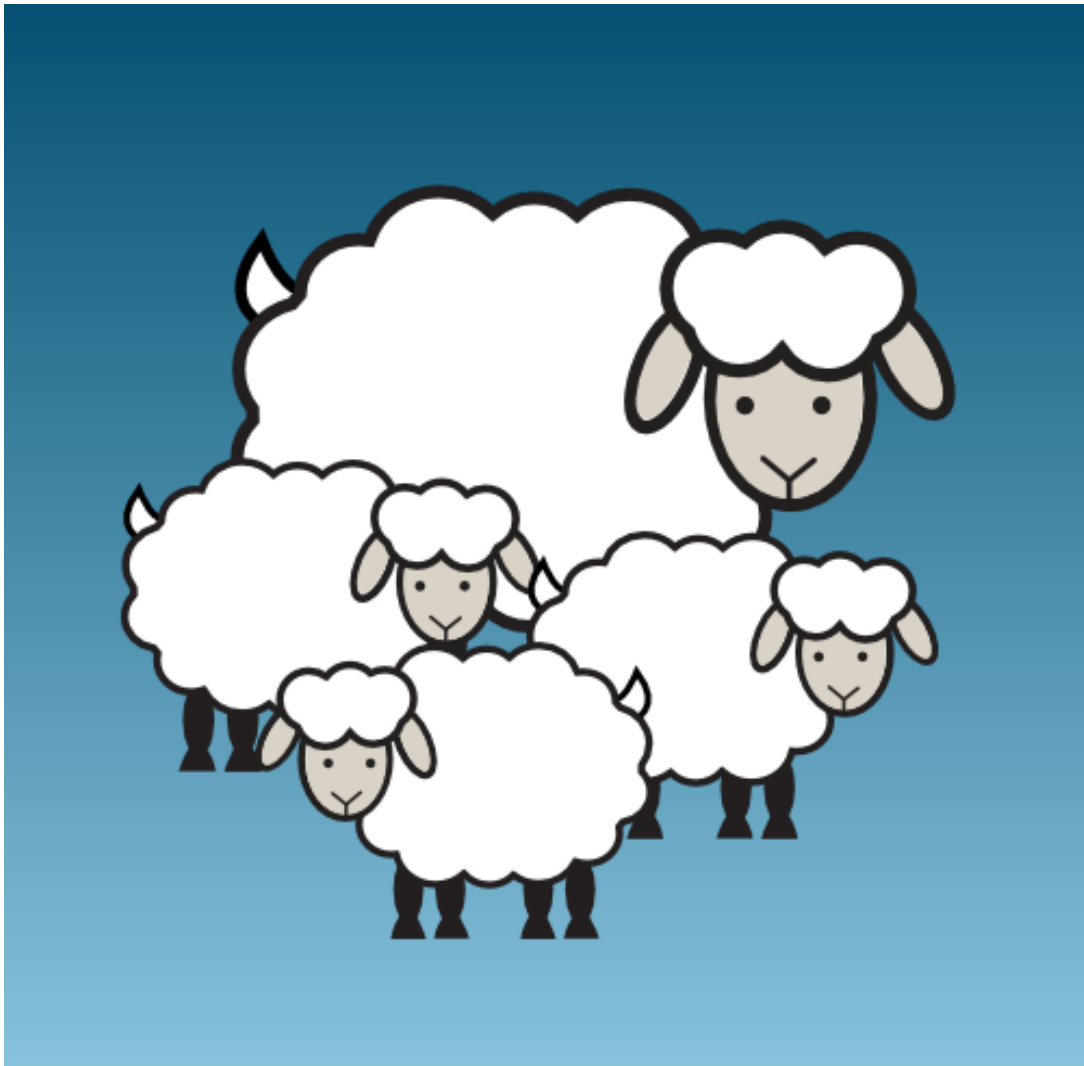


# The Official Crochet Charts User Guide



**For Version 1.2**

by Stitch Works Software

---

# The Official Crochet Charts User Guide: For Version 1.2

Brian Milco, Owner

Stitch Works Software

Copyright © 2010-2013 Stitch Works Software

## Abstract

Crochet Charts is an application specially designed to allow you to create design charts for crochet patterns. This document will describe the features and abilities of Crochet Charts.

this file is part of Crochet Charts.

Crochet Charts is free software: you can redistribute it and/or modify it under the terms of the GNU General Public License as published by the Free Software Foundation, either version 3 of the License, or (at your option) any later version.

You should have received a copy of the GNU General Public License along with Crochet Charts. If not, see <http://www.gnu.org/licenses/>

---

---

# Table of Contents

Introduction .....	vi
Open source .....	vi
What's new in this version? .....	vi
Additional Resources - Videos .....	vii
1. Installation .....	1
Windows .....	1
Mac .....	4
Linux .....	4
2. Quick Guide to Making a Chart .....	5
3. Adding Charts to a Document .....	8
4. Shortcuts .....	10
5. Tools .....	12
Properties .....	12
Export .....	12
Add Chart .....	12
Stitch Edit .....	12
Color Edit .....	12
Rotation Edit .....	12
Scale Edit .....	13
Row Edit .....	13
Indicator Edit .....	14
Box Select .....	15
Lasso Select .....	15
Line Select .....	16
Align and Distribute .....	16
Scale, Mirror and Rotate .....	16
Show Chart Center .....	17
Show Wedge Lines .....	17
Resize .....	18
No grid .....	18
Square grid .....	18
Round grid .....	19
Triangular grid .....	20
Grouping .....	21
Add image .....	21
Pattern colors .....	21
Layers .....	22
6. Exporting Files .....	23
Charts .....	26
Instructions .....	27
Legends .....	27
7. Stitch Library .....	30
Creating New Stitch Sets .....	30
Creating New Stitches .....	31
Adding Stitches to the Default Stitches list .....	31
Importing / Exporting Stitch Sets .....	32
Adding Custom Icons .....	33
Tips on Creating Icons .....	33
8. Options / Preferences .....	35
Application .....	35
Charts .....	36

The Official Crochet  
Charts User Guide

---

Legends .....	37
Tools .....	42
9. Miscellaneous .....	43
Check for Updates .....	43
About Crochet Charts .....	43
10. Limits on Use of Output .....	44
11. Troubleshooting .....	45
Bugs .....	45
Features .....	45

---

# List of Tables

4.1. Shortcuts ..... 10

---

# Introduction

This is the user guide for Crochet Charts by Stitch Works Software. If you have any questions that are not answered in this document please [contact us](#) and let us know so that we can answer your questions and improve this guide.

## Open source

Open-source is a very broad term, Crochet Charts in particular is released under the GPL v3 license, since Crochet Charts version 1.2.

Being open source software has multiple (very good) implications. First of all, it means that Crochet Charts is now completely free! Yes, free! Everyone can freely download, use and distribute Crochet Charts, forever. Secondly, the source code is now publicly available at <https://github.com/iPenguin/CrochetCharts>. Anyone can make changes, add new features, fix bugs,... . As long as there are people willing to work on it, development won't halt! Thirdly, you are allowed to share and redistribute Crochet Charts however you please, although it must always remain under this license.

Being licensed under the GPL v3 license also means that the program comes without warranty. we will do our best to offer support for the program, but should it suddenly decide to sell your house and move to the cloud, we are not held responsible... ;-)

## What's new in this version?

Version 1.2 comes with a series of new features and fixes. Following is a hopefully exhaustive list.

### **open source**

Crochet Charts is now completely open source!

### **Improved stability**

The stability of the program has drastically improved. The program now rarely, if ever, crashes.

### **Properties window**

The *properties window* provides context sensitive information about the current selection and allows you to change certain properties of the selection.

### **More export options**

Extra export options, allowing you to export only the selection and the ability to add a header and/or footer to the exported chart.

### **Full coloring options**

The foreground and background of stitches can now be fully colored using the [color edit tool](#) and the [pattern colors tab](#).

### **Full text support**

Using the [properties window](#), the font and size of an indicator can be edited, which allows for the user to write instructions, copyright notices,.. in the chart.

### **Image support**

It is possible to add custom images to the chart.

### **More selection methods**

Box, lasso and line selection are available. These make it easier to select big groups of items quickly.

### **Updated copy, mirror and rotate window**

The old mirror and rotate window now has an extra option, *copy*, which clones and moves the whole selection. Mirror now properly mirrors the selection, rather than rotating it.

### **Align to grid**

A square, round and triangular grid can be shown, and all items will automatically snap to this grid. This is useful to exactly position elements in a chart. Snap to angle makes stitches automatically rotate towards the center in a round grid.

### **Layers**

A chart can be divided into multiple layers, making it easier to organize big charts and work with overlapping elements.

### **New file format**

Crochet Charts now internally uses another file format. Because of this, charts created in this version can't be opened in older version of Crochet Charts

### **New method of calculating rotation and scale**

The application works with rotation and scale in a completely new way. Everything can now be rotated and scaled arbitrarily, without deforming the stitch or making it jump around the chart.

### **More options**

More options have been added to the application, allowing for more customizability. Among those options are the ability to rotate and scale around the center of a stitch, and the ability to center stitches on the mouse when pasting.

### **Resize window**

A resize window allows you to change the size of the chart.

## **Additional Resources - Videos**

There are [videos available on the website](#) that will walk you through using Crochet Charts.

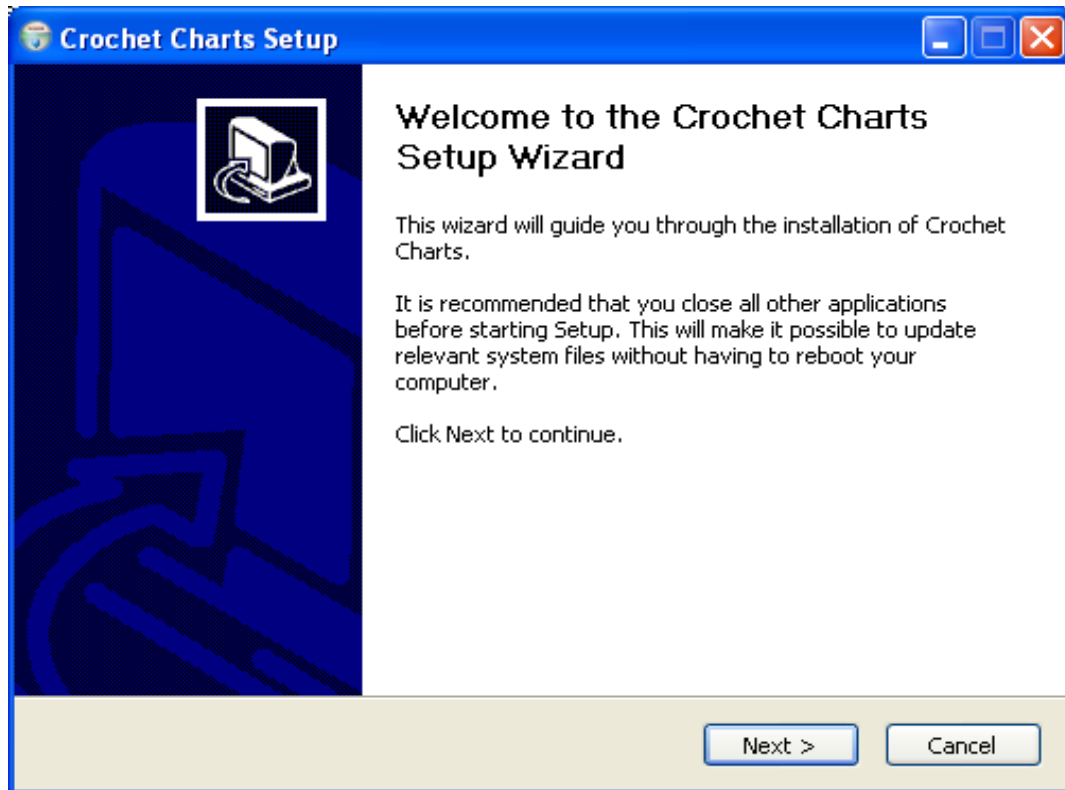
---

# Chapter 1. Installation

## Windows

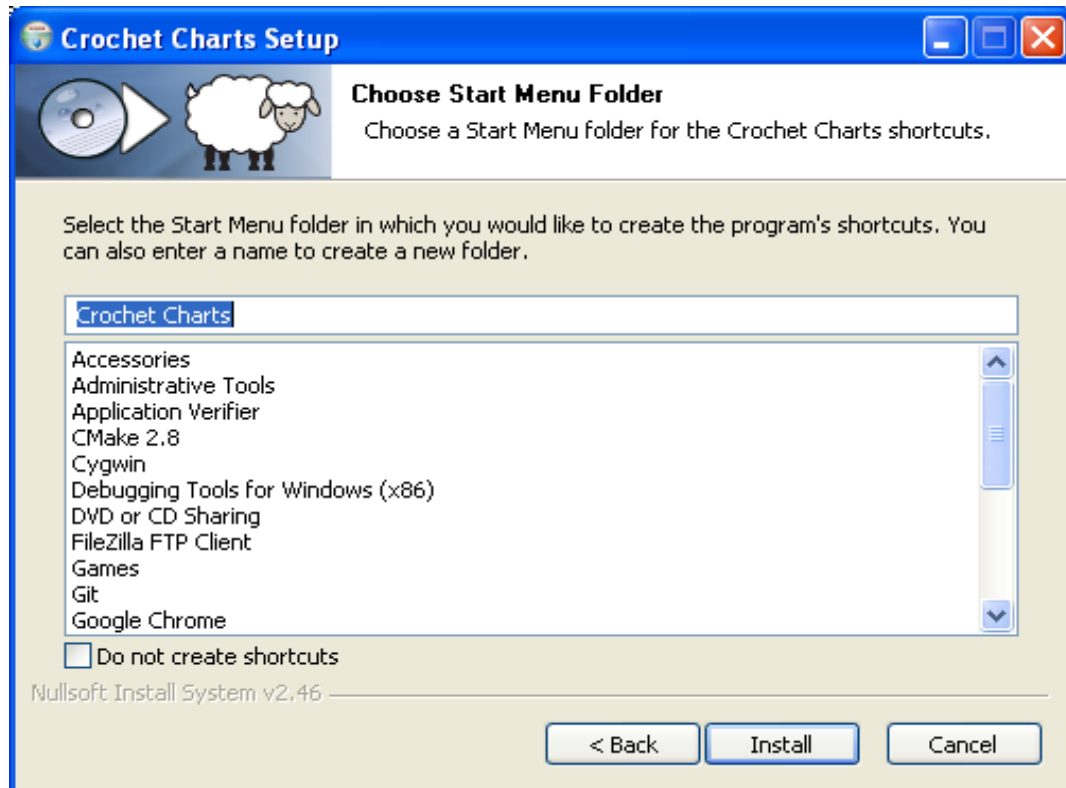
Crochet Charts will run on Microsoft Windows XP, Windows Vista, Windows 7, Windows 8, Windows 8.1 and Windows 10. To install the software you can download the setup file from [the Stitch Works Software website](#).

To install double click the installer and follow the instructions in the Installation Wizard.

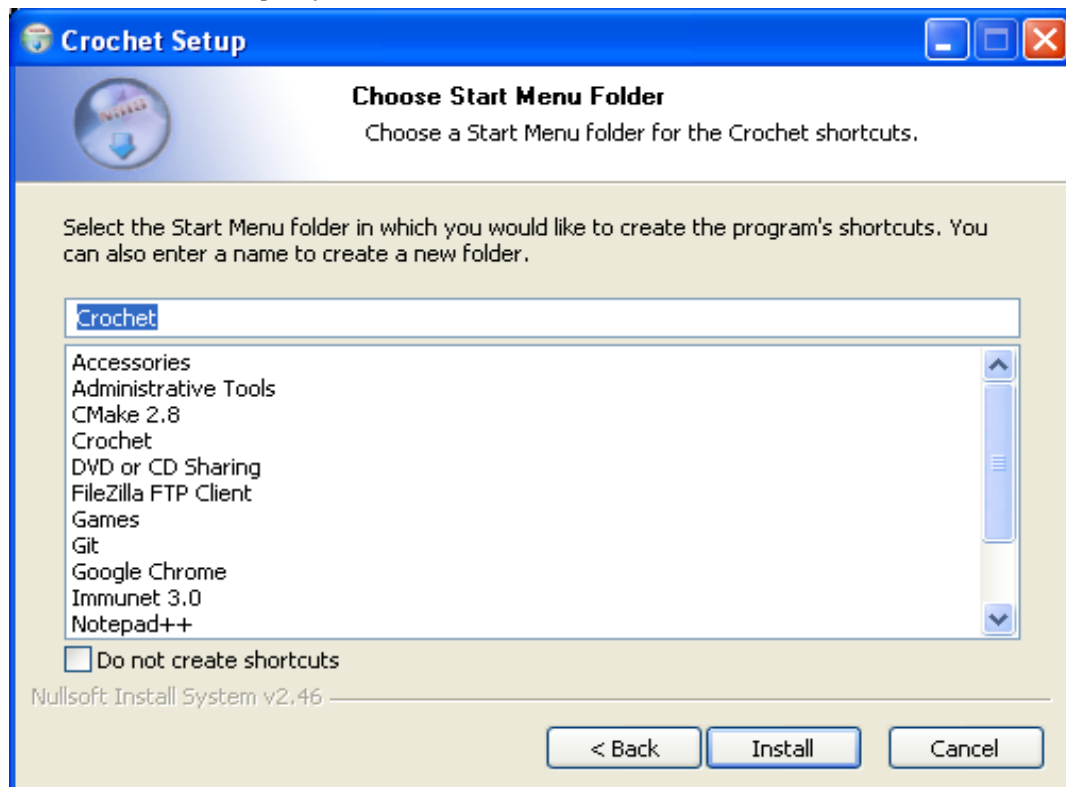


*The intro screen of the installation wizard*

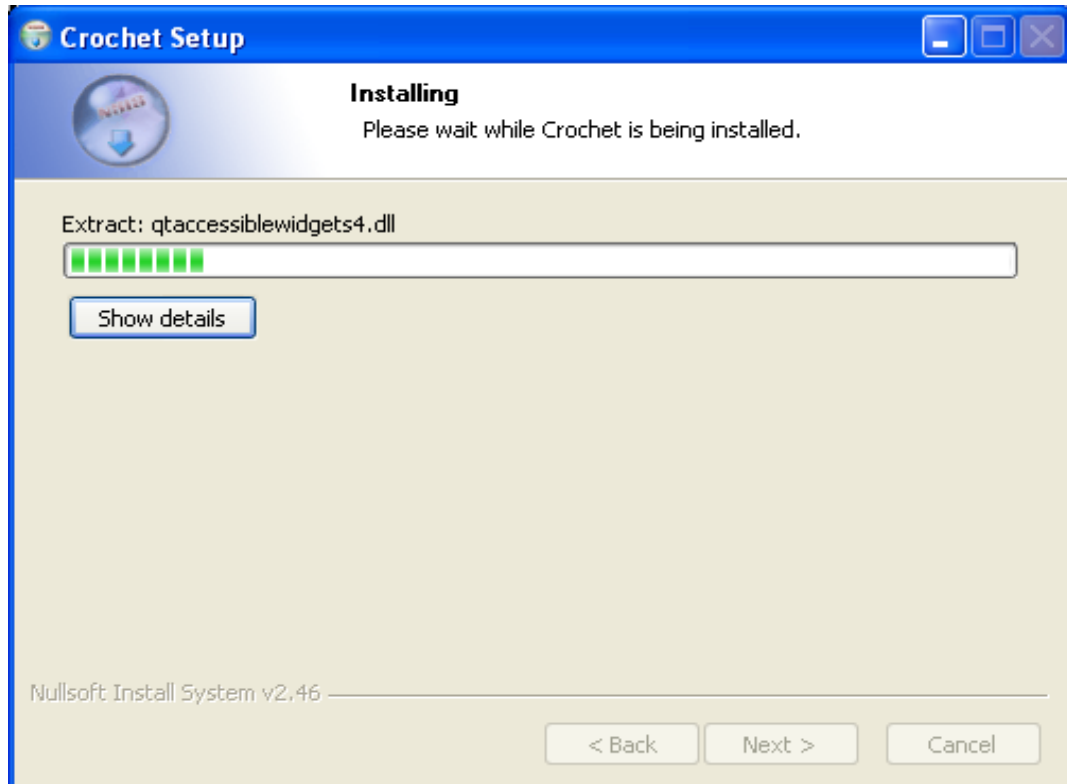




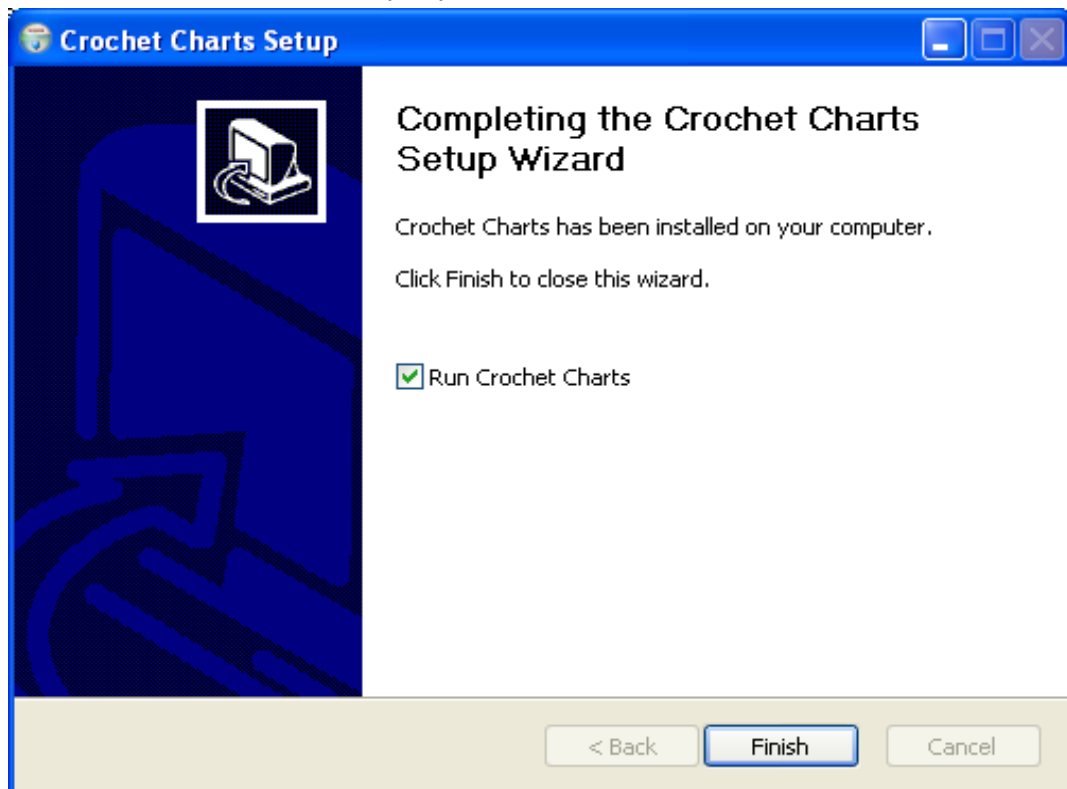
*Choose the installation path for Crochet Charts*



*Choose the Start Menu folder for Crochet Charts*



*The installer will install the needed files for Crochet Charts*

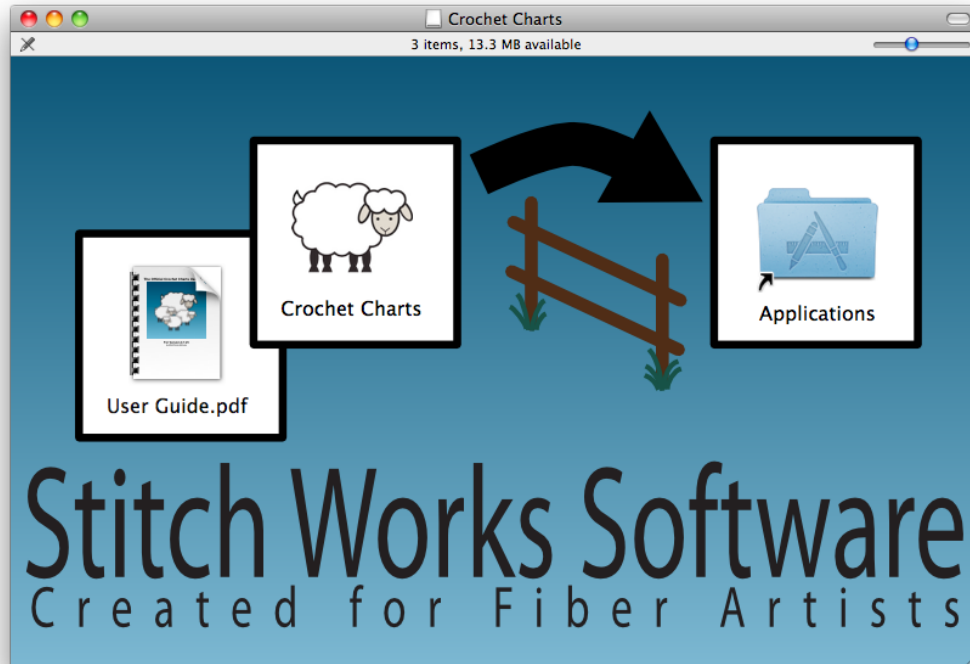


*Finish page for the installation of Crochet Charts*

## Mac

Crochet Charts will run on Mac OS X version 10.5-10.7 (Leopard, Snow Leopard, Lion). To install the software you can download the setup file from [the Stitch Works Software website](#).

Once the file has been downloaded you can install the software by dragging and dropping Crochet Charts into the Applications folder.



*The Mac installer for Crochet Charts*

## Linux

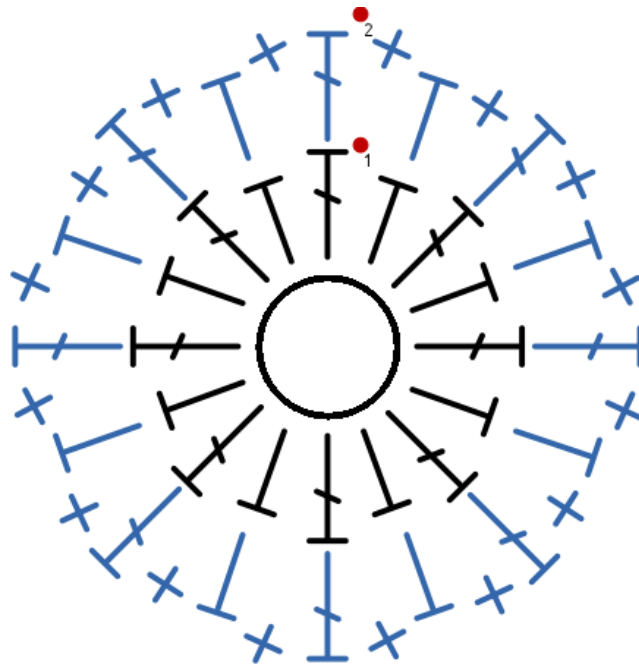
For Debian/Ubuntu based distributions you can use the .deb package. If you're having any problems please [contact us](#)

---

# Chapter 2. Quick Guide to Making a Chart

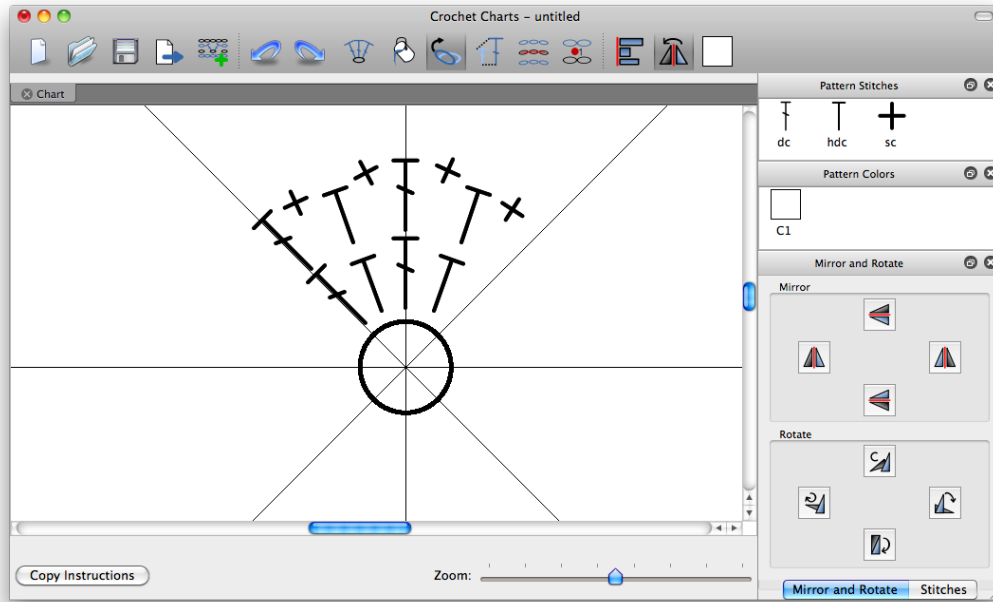
This chapter will give a very quick overview for creating a new chart. For more details about how to use the features referred to in this quick guide follow the links presented.

This is only a general guide and is not the only way to create charts with Crochet Charts. However the work flow presented here is likely the easiest and fastest way to create a chart. Hopefully you will consider this chapter as a starting point and not an ending point.



*Sample chart*

- (1) Create a [new Blank chart](#).
- (2) [Add the chart center symbol](#), in the menu **Charts** → **Show Chart Center**
- (3) [Show the Wedge Lines](#) on the chart using **Charts** → **Show Wedge Lines**
- (4) Create the top wedge of the chart. For best results make sure your stitches are placed within the Wedge Lines so that they translate to the other three quarters of the chart well.

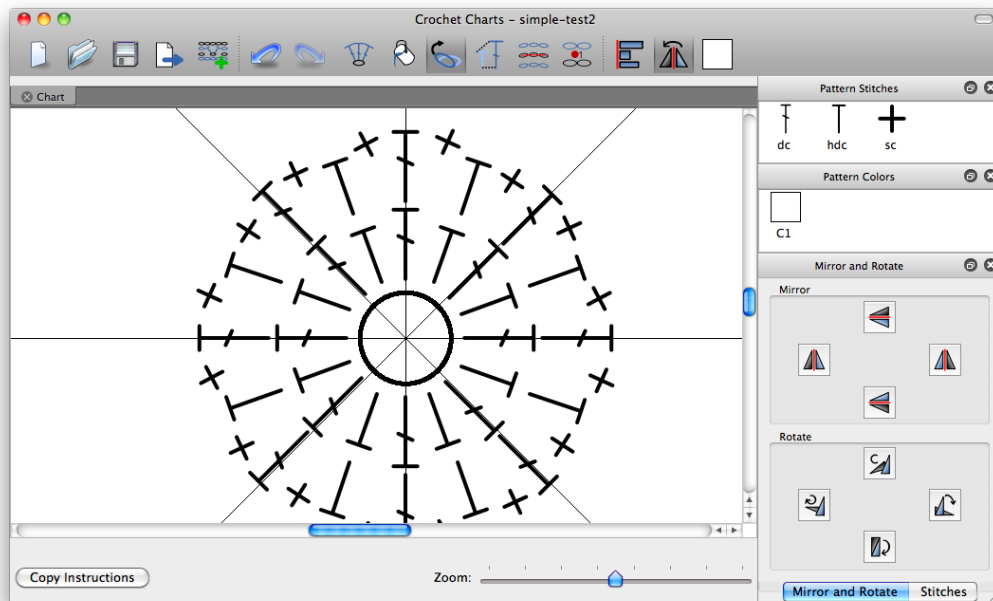


*The chart after step 4*

(5) **Rotate** and **scale** individual stitches as need, copy, paste and **mirror**. Use **align and distribute** to help with spacing. When scaling if you **Ctrl-click** (**Apple-click**) on the stitch it will persevere the ratio of the stitch.

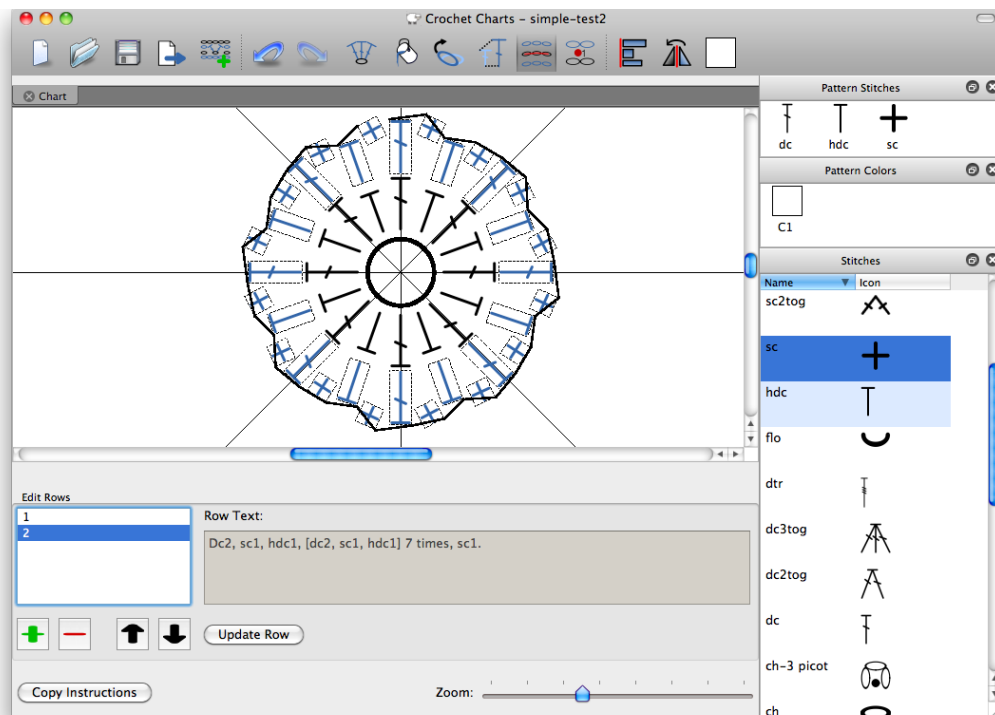
(6) Select the wedge of stitches you have just created, copy, paste and **rotate 90°**, this will give you the right side of the pattern. Paste and rotate 180° gives you the bottom, and paste and rotate 270° gives you the left.

(7) Add **indicators** for rows, and/or other features you wish to highlight on the chart. Make any other minor adjustments as desired.



*The chart after step 7*

- (8) Connect stitches to [create the chart rows](#).



*The chart after step 8*

- (9) [Export the chart and legends](#) to your desired file formats for use in documents, or for publication.

---

# Chapter 3. Adding Charts to a Document

When you first open Crochet Charts you are presented with a blank window with a "New Chart Options" dialog at the top. This dialog gives you quick access to create a new document with a single chart. A document can contain any number of charts. To add more charts simply goto **Charts** → **Add Chart**.

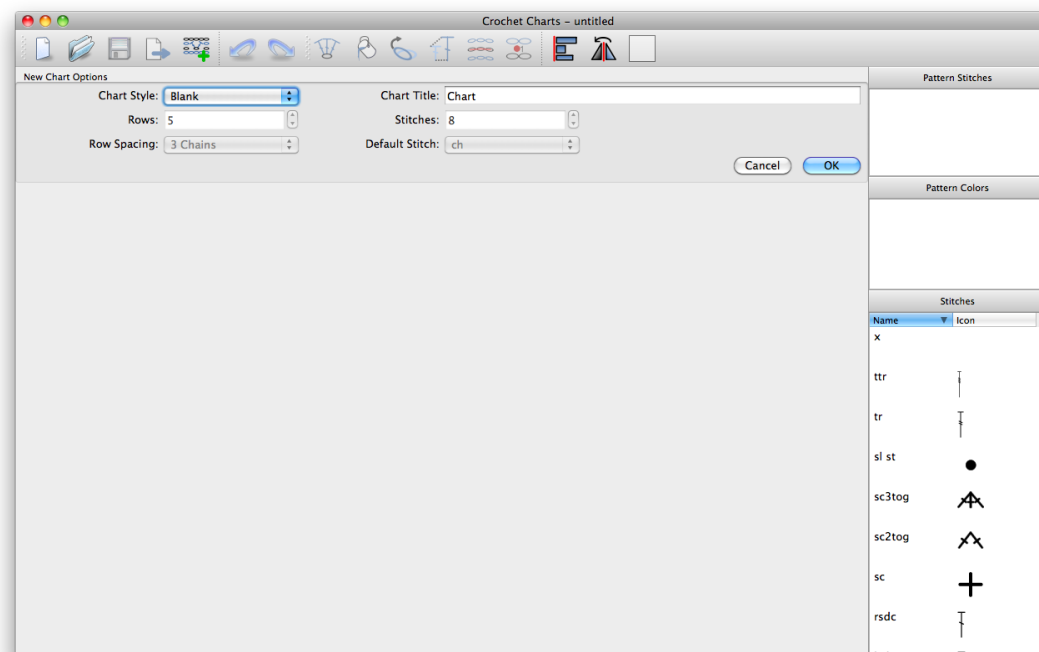
The Default Stitch is the stitch used when generating *Rows* or *Rounds*. You can set which stitch is used as the default in the [Options/Preferences](#).

The Row Spacing option allows you to specify how much distance should be between the rows, the unit of distance is the height of a chain stitch. For your convenience you can give each chart a title so that you can quickly identify which chart you are working with.

Selecting a *Blank* chart style will present you with a blank canvas from which you can create a free form pattern. This gives you the flexibility to create charts like you would in most drawing programs except Crochet Charts uses stitches instead of pixels and lines.

If you select a *Rows* chart style then you will get all the functionality of a Blank chart with the addition that the software will create a grid of stitches as defined by the Rows, Stitches, Row Spacing and Default Stitch. The software will add those stitches to the [defined Rows](#).

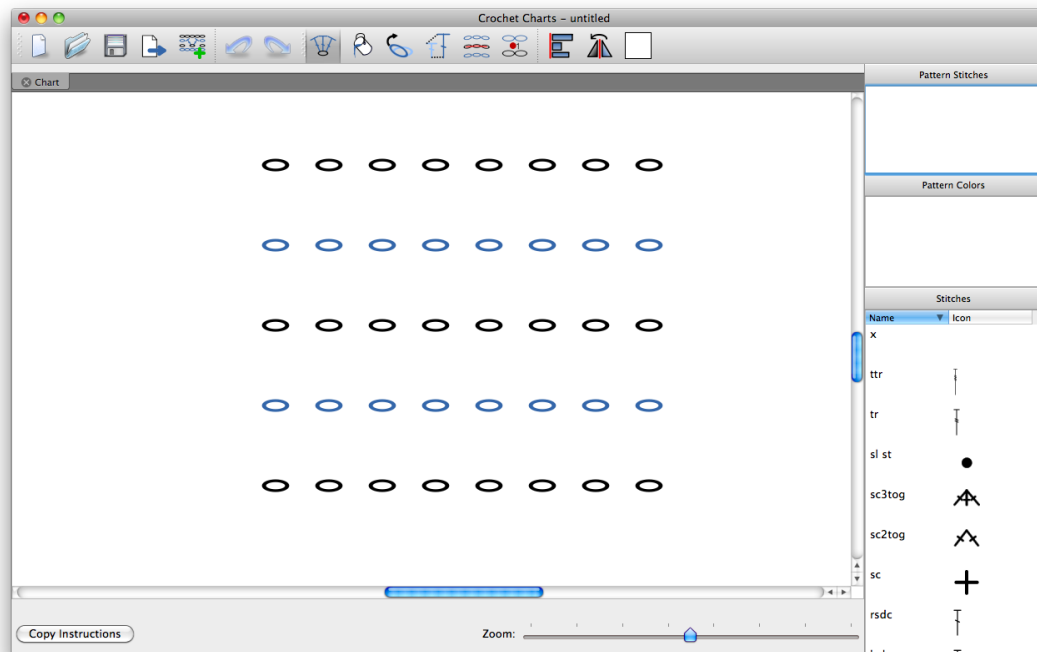
If you select a *Rounds* chart style you will get all the functionality of a Blank chart with the addition that the software will create rounds of stitches starting in the center of the chart and working out, increasing by the number of stitches you select for each additional row. The software will add those stitches to the [defined Rows](#).



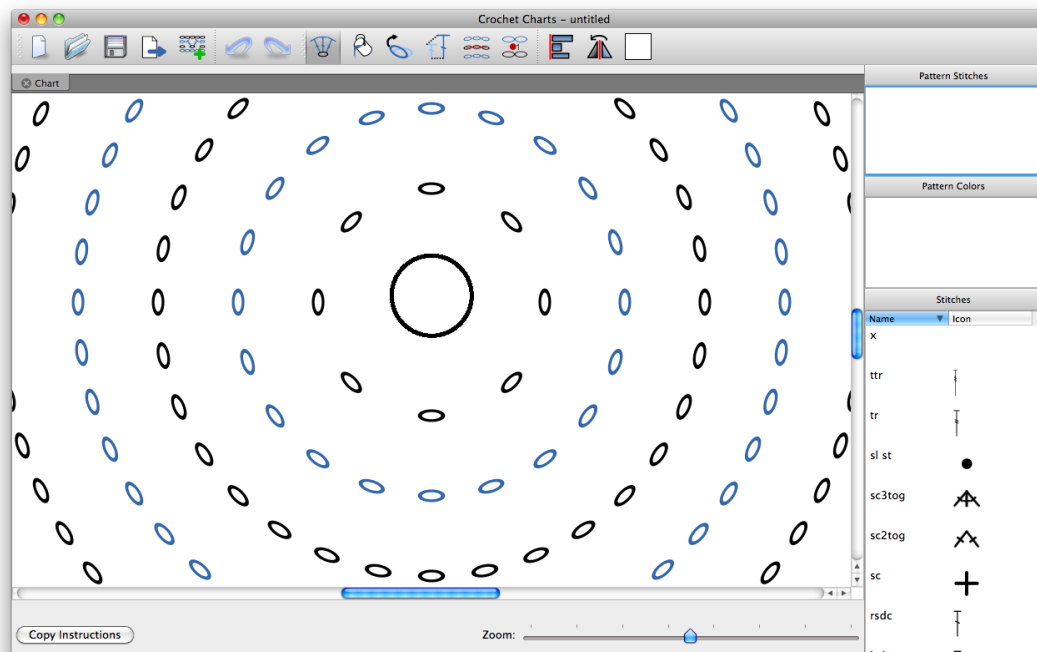
*The main window showing the New Chart Options dialog*

While editing the chart you can change the stitches, colors, positions, rotation, and scale of the stitches, you can add new stitches and rows. You can also add an unlimited number of movable indicators to the

chart that can contain text. You can use the indicators as row number indicators, or to draw attention to other parts of the chart.



*The main window showing a basic Rows chart*



*The main window showing a basic Rounds chart*



---

# Chapter 4. Shortcuts

This is a quick overview of the keyboard shortcuts available in Crochet Charts.

**Table 4.1. Shortcuts**

Action	Windows / Linux	Mac
File menu		
New	Ctrl + N	Command + N
Open	Ctrl + O	Command + O
Save	Ctrl + S	Command + S
Save As	Shift + Ctrl + S	Shift + Command + S
Print	Ctrl + P	Command + P
Print Preview	Shift + Ctrl + P	Shift + Command + P
Export	Shift + Ctrl + X	Shift + Command + X
Quit	Ctrl + Q	Command + Q
Edit menu		
Cut	Ctrl + X	Command + X
Copy	Ctrl + C	Command + C
Paste	Ctrl + V	Command + V
Undo	Ctrl + Z	Command + Z
Redo	Ctrl + Y / Shift + Ctrl + Z	Shift + Command + Z
View menu		
Zoom In	Ctrl + +	Command + +
Zoom Out	Ctrl + -	Command + -
Show/hide Properties	P	P
Full Screen	F11	Shift + Command + F
Modes menu		
Stitch Edit	D	D
Color Edit	C	C
Rotation Edit	R	R
Scale Edit	S	S
Row Edit	W	W
Indicator Edit	I	I
Next Selection Mode	B	B
Charts menu		
New Chart	Shift + Ctrl + N	Shift + Command + N
Next Grid Mode	G	G
Stitches menu		
Group	Ctrl + G	Command + G

---

## Shortcuts

---

Action	Windows / Linux	Mac
Ungroup	Shift + Ctrl + G	Shift + Command + G
Show/hide Align and Distribute Tools	Shift + F7	Shift + F7
Show/hide Mirror and Rotate Tools	Shift + F8	Shift + F8
Tools menu		
Stitch Library	Ctrl + L	Command + L
Options	Alt + O	Command + ,
Help menu		
Crochet Charts Help	F1	F1

---

# Chapter 5. Tools



*The toolbar in Crochet Charts*

The tools on the tool bar are listed below in order from left to right: New Document, Open File, Save File, [Export](#), [Add Chart](#), Undo, Redo, [Stitch Edit](#), [Color Edit](#), [Rotation Edit](#), [Scale Edit](#), [Row Edit](#), [Indicator Edit](#), [Resize Tools](#), [Align and Distribute Tools](#), [Mirror and Rotate Tools](#), [Box Select](#), [Lasso Select](#), [Line Select](#), [Disable Grid](#), [Square Grid](#), [Triangular Grid](#) and [Round Grid](#).

## Properties

**View → Show properties**

The properties menu shows context sensitive information about your current selection. It allows you to change the position, angle and scale of your selection, as well as font settings when an indicator is selected, image settings when an image is selected, and grid settings when nothing is selected

## Export

**File → Export...**

This option allows you to export charts, and legends to different file formats: PDF, SVG, PNG, JPEG, TIFF, BMP. The quality of the exports can be controlled and you can adjust it from web quality to publication quality. See [Exporting Files](#) for more information about exporting files.

## Add Chart

**Charts → Add Chart**

Add a new chart to this document. A document can contain any number of charts.

## Stitch Edit

**Modes → Stitch Edit**

This mode allows you to add, edit and move stitches on the chart. For minor adjustments to the positioning of a stitch or selection of stitches you can use the arrow keys.

## Color Edit

**Modes → Color Edit**

This mode allows you to edit the background and foreground colors of stitches. By clicking on a stitch his foreground and background color will be changed to the currently selected colors. To change the selected colors, use the [Pattern Colors Menu](#).

## Rotation Edit

**Modes → Rotation Edit**

In this mode you can edit the angle that the stitch is tilted at. You can rotate the stitch 360° relative to the bottom of the stitch. For minor adjustments to the angle of a stitch or selection of stitches you can use the arrow keys. Right or Down are clock-wise and Left or Up are counter-clockwise.

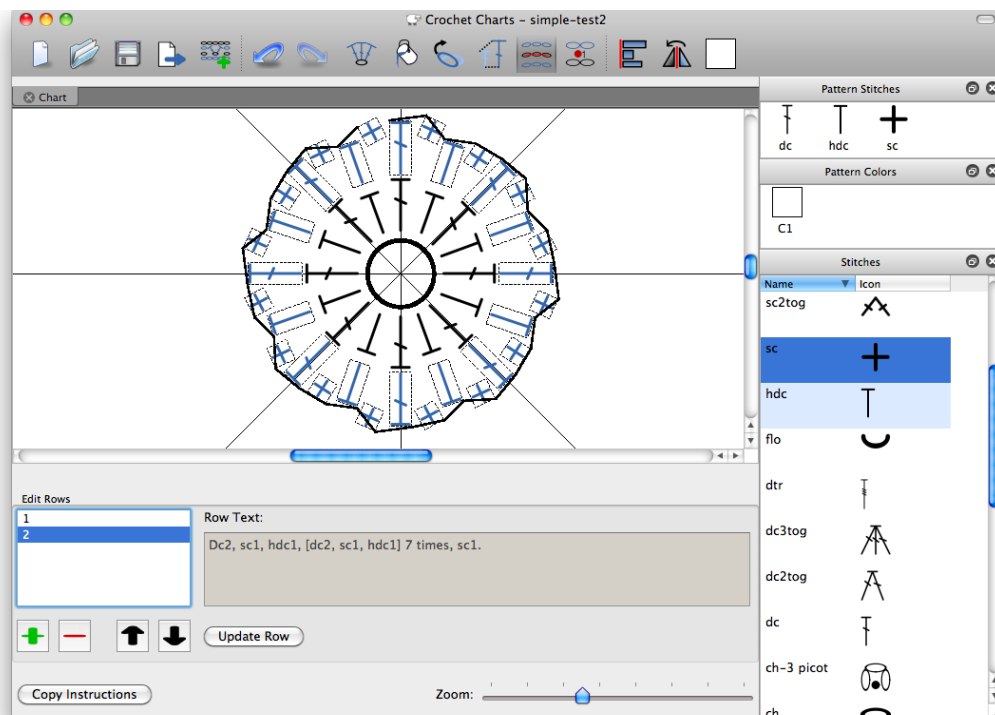
## Scale Edit

### Modes → Scale Edit

This mode allows you to scale the size of the stitch height and width independently of each other. If you would like to scale the stitch in a 1:1 ratio you can hold the **Ctrl** (or **Apple**) key while you scale it. For minor adjustments to the scale you can use the arrow keys. Up and Right increase the height and width respectively, and Down and Left decrease the scale. If you hold down **Ctrl** (or **Apple**) the scale will increase both height and width in relation to each other.

## Row Edit

### Modes → Row Edit



#### *The user interface for row edit mode*

Crochet Charts allows the user to place stitches anywhere on the chart, because of this flexibility there is no way to automatically decide which row a stitch belongs on. The purpose of this interface is to define which stitches belong on each row, and in what order.

Defining rows provides the following benefits: automatically alternate row colors as defined in the settings, and automatically generate written instructions for the chart.

To create a row select the Row Edit mode icon from the tool bar, or select **Modes → Row Edit**. The Row Edit interface will open as in the screenshot above.

Selecting a row from the row list on the far left hand side will show you the row text as it currently stands. It will also highlight all of the stitches in that row, and connect them with black lines.

To create your first row go ahead and select the first stitch of the new row. Without releasing the mouse button click and drag to to the next stitch in the row. A red line will connect the mouse to the last stitch in the row. When you connect a new stitch to the row it will for a black line between the new stitch and the previous stitch. The red line will now connect the mouse to the new stitch. Continue to connect all the stitches in the row. Once you are done creating the row release the mouse button, and click on the green plus (+) in the Edit Rows dialog at the bottom of the screen. Your row will not be tracked until you've added it to the list with the green plus (+).

The red minus (-) removes the selected row from the list (it does not remove the stitches from the chart), and the up and down arrows change the order of the rows.

If you release the mouse button while creating a row, or if you come back later and want to add more stitches to a row you can do so. If you are adding stitches to the end of a row just click on the last stitch drag the red line to the next stitches in order. If you want to add stitches into the middle of the row you will have to start from the first stitch of the row.

If you want to add stitches to a row select the row from the Row List, the stitches in the row will be selected and the connections between the stitches will be shown as lines joining the stitches. Select the last stitch that is joined and connect it to the new stitches you wish to add to the row.

If you wish to redraw the entire row select the row from the Row List, click on the canvas, which will un-select all of the stitches in the row. Then select all the stitches you would like in the updated row, in order. Once you've finished selecting the stitches click the "Update Row" button.

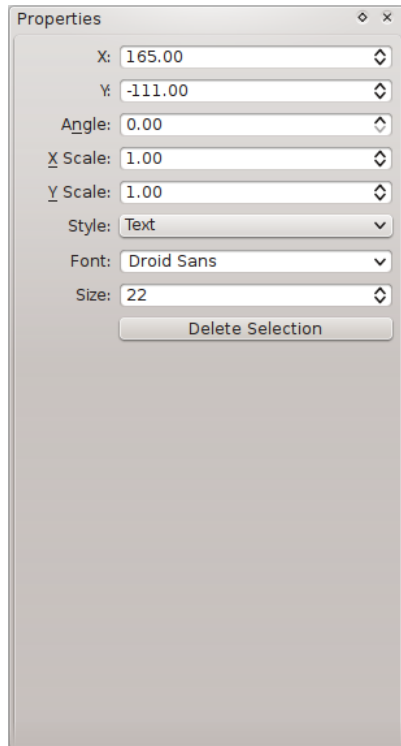
Once you have finished editing the rows, you can close the Row Edit dialog by clicking on any of the other edit modes.

## Indicator Edit

### Modes → Indicator Edit

Indicators can be used as row indicators, or to point out pieces of the chart that need special notes. The indicators on the chart can show the dot and/or text based on the [Chart Options/Preferences](#) or the [properties window](#).

Once you're in the Indicator Edit mode you can click on the chart to add a new indicator. If you've setup the indicators with text you can edit the text by clicking on the selected indicator.



*The properties for indicators*

When an indicator is selected, the properties menu changes to show some indicator-only parameters.

The style drop-down menu allows you to choose whether to show a dot and text, just a dot or just text. The last option can be used to add a description, a disclaimer,... to your chart, although the [export menu](#) also allows you to add a custom header and footer to your chart.

The font and size option work as you would expect. In the font textbox, you can either write the name of the font yourself, or open a drop down menu so you can see all available fonts. It is best to stick to the most popular fonts. Some are only available on certain platforms (like Windows or Mac) and as a result wouldn't work on every computer.

## Box Select

**Modes → Box select**

One of three selection modes. By holding the left mouse button down and moving the mouse, you draw a rectangle, selecting everything that intersects with this rectangle.

## Lasso Select

**Modes → Lasso select**

One of three selection modes. By holding the left mouse button down and moving the mouse, you can freely draw a shape, selecting everything that intersects with this shape.

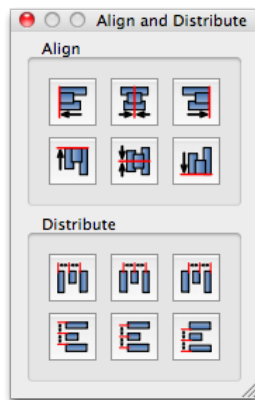
# Line Select

Modes → Line select

One of three selection modes. By holding the left mouse button down and moving the mouse, you can freely draw a line, selecting everything that intersects with this line.

# Align and Distribute

Stitches → Show Align and Distribute



*The align and distribute tools*

A set of tools that allows you to align and distribute stitches evenly on the chart.

You can align to left edge, right edge, center on the vertical axis, top edge, bottom edge, center on the horizontal axis.

You can distribute equidistantly on left edges, right edges, from the centers horizontally, or on the top edges, bottom edges, or from the centers vertically.

# Scale, Mirror and Rotate

Stitches → Show Mirror and Rotate



*The mirror and rotate tools*

A set of tools that allows you to copy, mirror and rotate groups of stitches on the chart.

Copying and mirroring can be done up, down, left, and right.

Copying will clone the selected stitches and move them in the selected direction. For example, if your copy left, the right most edge of the right most cloned stitch will touch the left most edge of the left most selected stitch.

Mirroring is done across vertical or horizontal lines. For example if you mirror left, the left most point of the left most selected stitch is used as the mirroring line. Mirroring will automatically make copies of the stitches that are to be mirrored.

Rotating stitches using this tool will be done from bottom left corner of the group of stitches selected, unless you have a chart center on the chart (**Charts → Show Chart Center**) in which case the selection will be rotated around the center of the chart.

There are 3 buttons that represent 90° (on the right), 180° (on the bottom), 270° (on the left), and a fourth button (on the top) representing a custom option that allows you to select exactly how many degrees you want to rotate the selection.

Rotating operates on the selected stitches, unlike mirroring.

## Show Chart Center

**Charts → Show Chart Center**

This option allows you to show a circle as the center of the chart. If the center is visible it will be used as the pivot point for the rotation functions of the [Mirror and Rotate tools](#).

## Show Wedge Lines

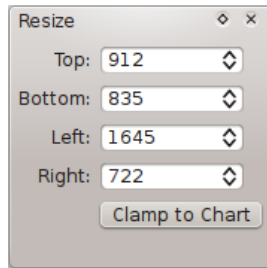
**Charts → Show Wedge Lines**



This option shows a vertical and horizontal line and two 45° lines that go through the center point of the chart, or if you have the Center symbol visible they cross at the center of the symbol. These lines are very useful when creating a round chart where you want to start by creating a wedge shape design. If you keep your stitches within the lines when you go to rotate the selection around the center point you will have a consistent looking repeat.

## Resize

**Charts → Resize**



*The resize tools*

A menu that allows you to resize the chart.

Using the four number boxes, you can change the size of the chart. When you move a stitch outside of the chart, it will automatically resize.

The Clamp To Chart button will resize the chart so it exactly fits the content. This will also automatically center the chart on the screen.

## No grid

**Charts → Grid → No grid**

Disables the grid. No grid is shown and there is no snap to grid.

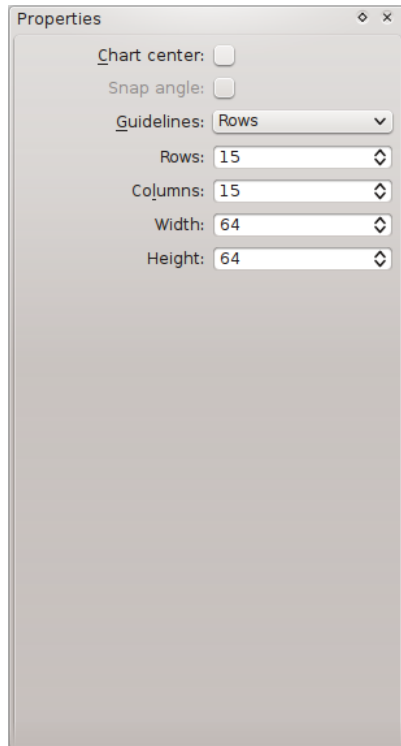
## Square grid

**Charts → Grid → Square grid**

Enables a square grid, and snaps items on this grid.

Whenever you move an object, it will snap to the nearest point on the grid. This is useful to easily layout stitches in a grid or row pattern.

When no items are selected, the grid can be customized in the [properties window](#).



*The properties for the square grid.*

In the properties window, the rows and columns setting changes the amount of vertical and horizontal squares in the grid. Width and height determines the size of each individual square in the grid.

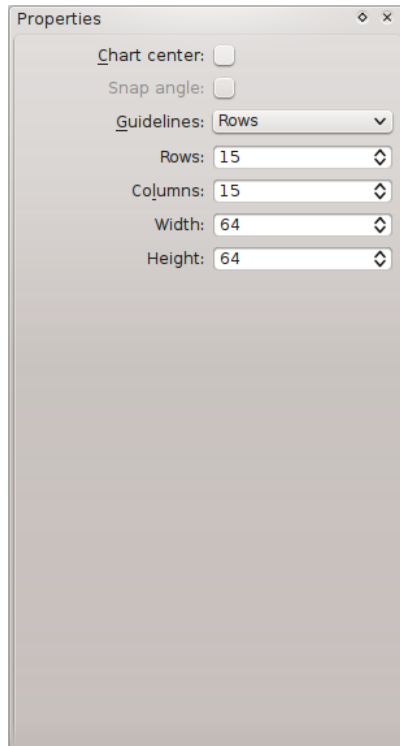
## Round grid

### **Charts → Grid → Round grid**

Enables a round grid, and snaps items on this grid.

Whenever you move an object, it will snap to the nearest point on the grid. This is useful to easily layout stitches in a grid or row pattern.

When no items are selected, the grid can be customized in the [properties window](#).



*The properties for the round grid.*

In the properties window, the rounds setting changes the amount of layers the circle has. Columns decides in how many slices the circle is divided, and height changes the height of each layer.

If snap to grid is enabled, stitches will automatically rotate towards the center of the chart. This is useful for quickly making round charts.

## Triangular grid

### **Charts → Grid → Triangular grid**

Enables a triangular grid, and snaps items on this grid.

Whenever you move an object, it will snap to the nearest point on the grid. This is useful to easily layout stitches in a grid or row pattern.

When no items are selected, the grid can be customized in the [properties window](#).



*The properties for the Triangular grid.*

In the properties window, the triangles setting changes the amount of layers of triangles in the grid. Width and height changes the size of each individual triangle.

## Grouping

**Stitches → Group** and **Stitches → Ungroup**

This option allows you to group and ungroup stitches together. When stitches are grouped they can be moved and changed as one unit.

## Add image

**Edit → Insert → Image**

Inserts an image into the chart. A file chooser allows you to pick the image you want and embed it directly into the chart. Using the [properties window](#), the path of the selected image can be changed.

## Pattern colors

**View → Show pattern colors**

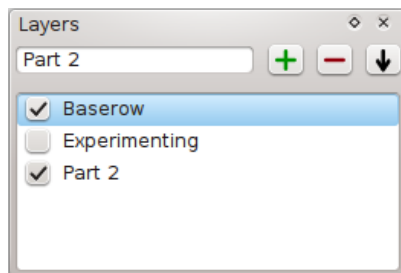


*The pattern colors menu.*

This menu allows you to choose the foreground and background color of stitches. By pressing either *stitch* or *background*, you are prompted with a color picker where you can change the selected color. These colors will be applied to new stitches placed with the [stitch edit tool](#). To change the color of existing stitches, use the [color edit tool](#).

## Layers

**View → Show layers**



*The layers menu.*

This menu allows you to work with layers. Each element in the chart is assigned to a certain layer, and can only be selected while that layer is selected. This allows you to divide up the chart in parts, so you can work on one part without being able to accidentally select or delete unrelated parts. Don't worry, if you don't want to use it, you can just hide and ignore this window.

A layer can be selected simply by clicking on it.

The checkbox to the left of each layer hides that layer, making everything that is part of that layer invisible.

By clicking on the *plus button* a new layer is added, with the name that was entered into the textbox. The name of a layer can be changed by double clicking on it.

By clicking on the *minus button* the selected layer, and everything contained in that layer, is removed.

The button with the downwards button merges the selected layer with the layer underneath it. This moves all the elements from the current layer to the layer it is going to merge with, and removes the current layer from the list.

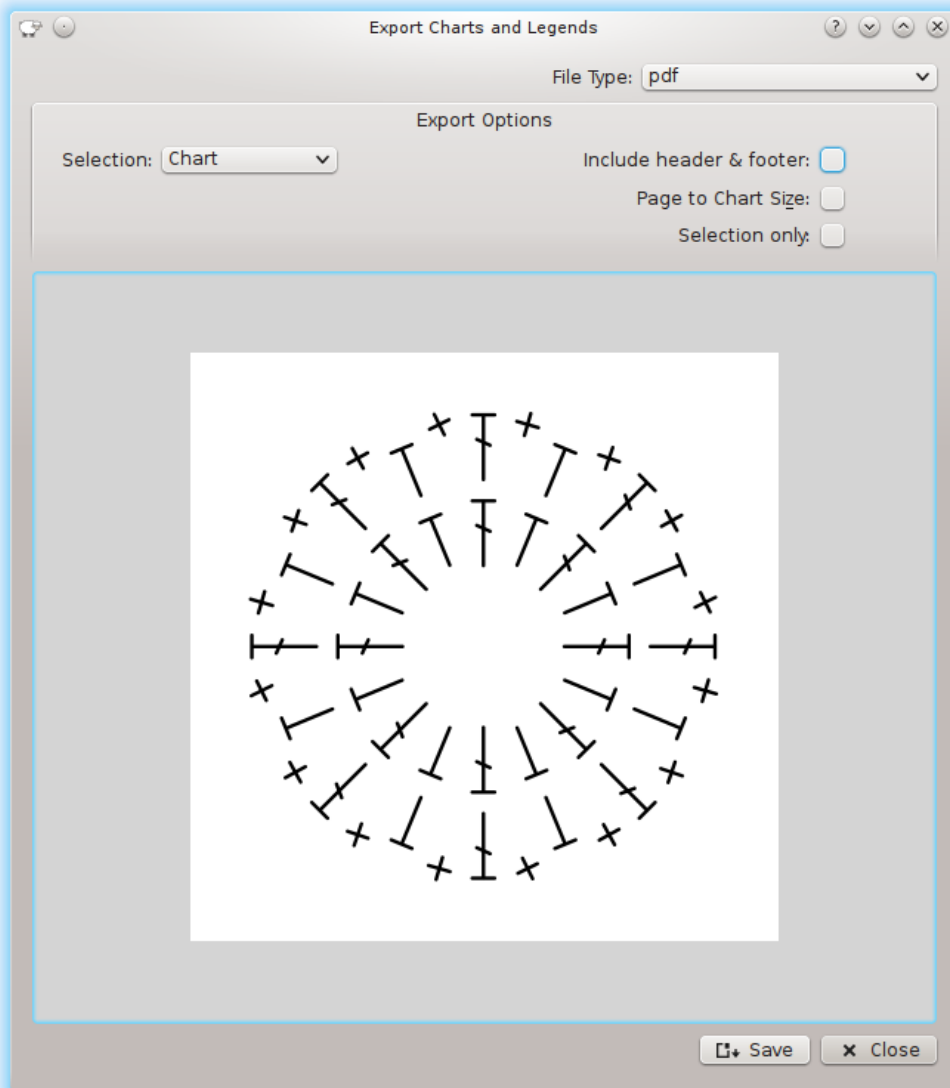
---

# Chapter 6. Exporting Files

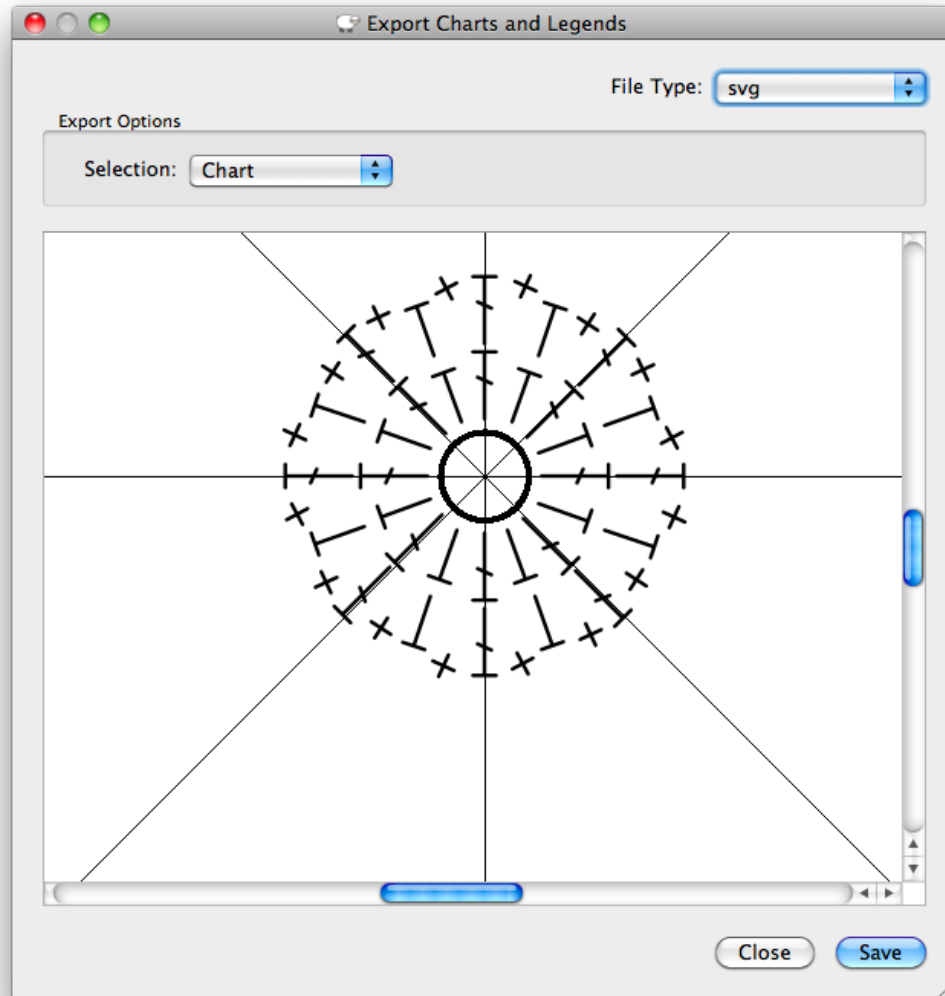
All pieces of your work can be exported to formats that are commonly used on websites, in magazines, and in publication.

You can export to any of the following file formats: PDF, SVG, JPEG, PNG, TIFF, and BMP. The first two formats are vectored graphics which means they will not pixelate when you zoom in or blow up the image. For this reason they are commonly used in magazines and publications. JPEG and PNG are also sometimes accepted by magazines and publications, however if the publisher accepts them they usually want a resolution of 300 DPI. Before sending a file to a publisher you should ask them what file types they will accept.

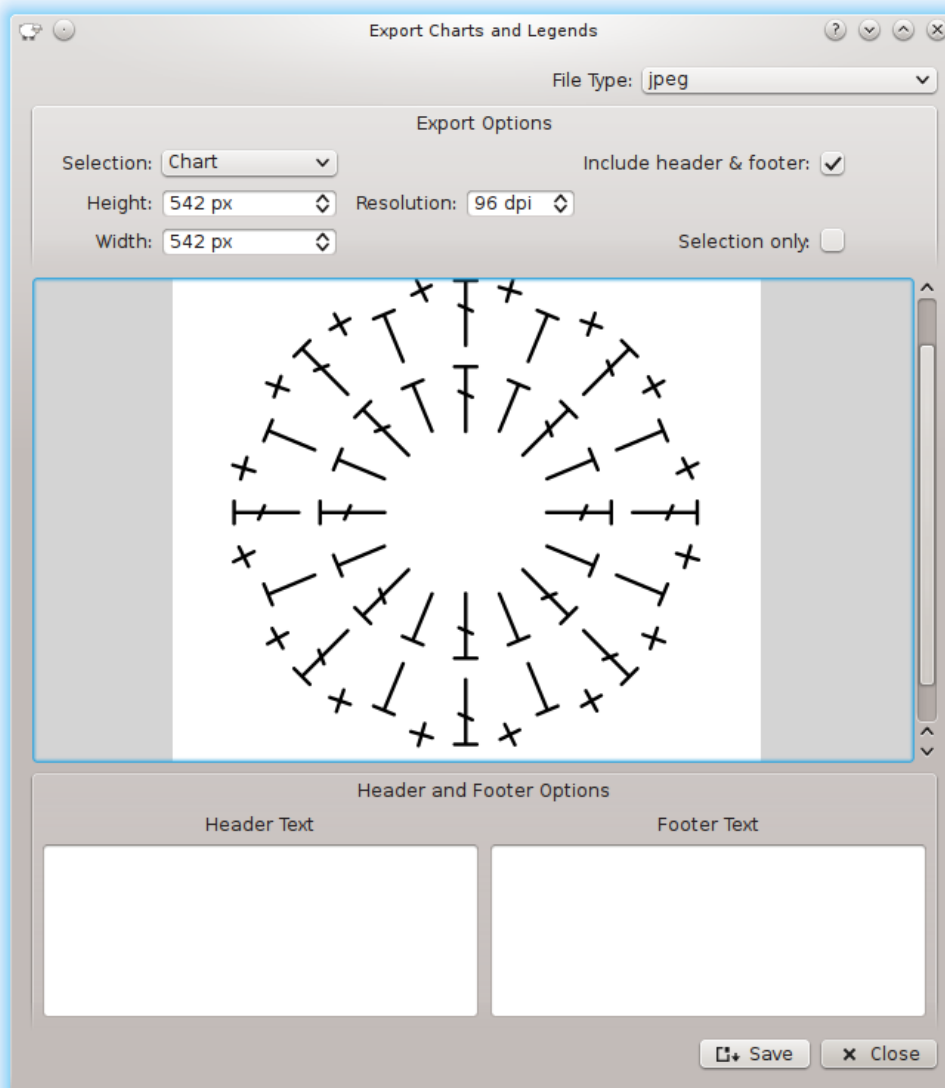
To export any part of your document as images click on the **Export** icon in the toolbar or goto **File** → **Export**. From this dialog you may choose to export some or all of the charts, the stitch legend or the color legend.



*Options window for export as a pdf*



*Options window for export as a svg*



*Options window for export as a jpeg, png, tiff, or bmp*

The above screenshots show all the possible options for exporting images. Below is an explanation of these options.

### **Selection**

This allows you to choose to export the chart, stitch legend, or color legend. Additionally if you export to PDF you can export all charts into one file with each chart on it's own page.

### **Resolution**

The quality of the image output. 96 dpi is usually considered standard quality, and 300 dpi is print or publication quality. You should be aware that higher quality means larger file size, and that you should weigh that against your intended use of the file.

### **Include header and footer**

If this is checked, two text boxes will appear near the bottom of the export screen, prompting you to enter a header and/or footer text. This text will appear on your exported image.



**Page to Chart Size**

By default the page size is set for a standard A4 letter page and the chart is scaled to fit onto the page. If the *Page to Chart Size* option is checked then the page size is set to the size of the chart.

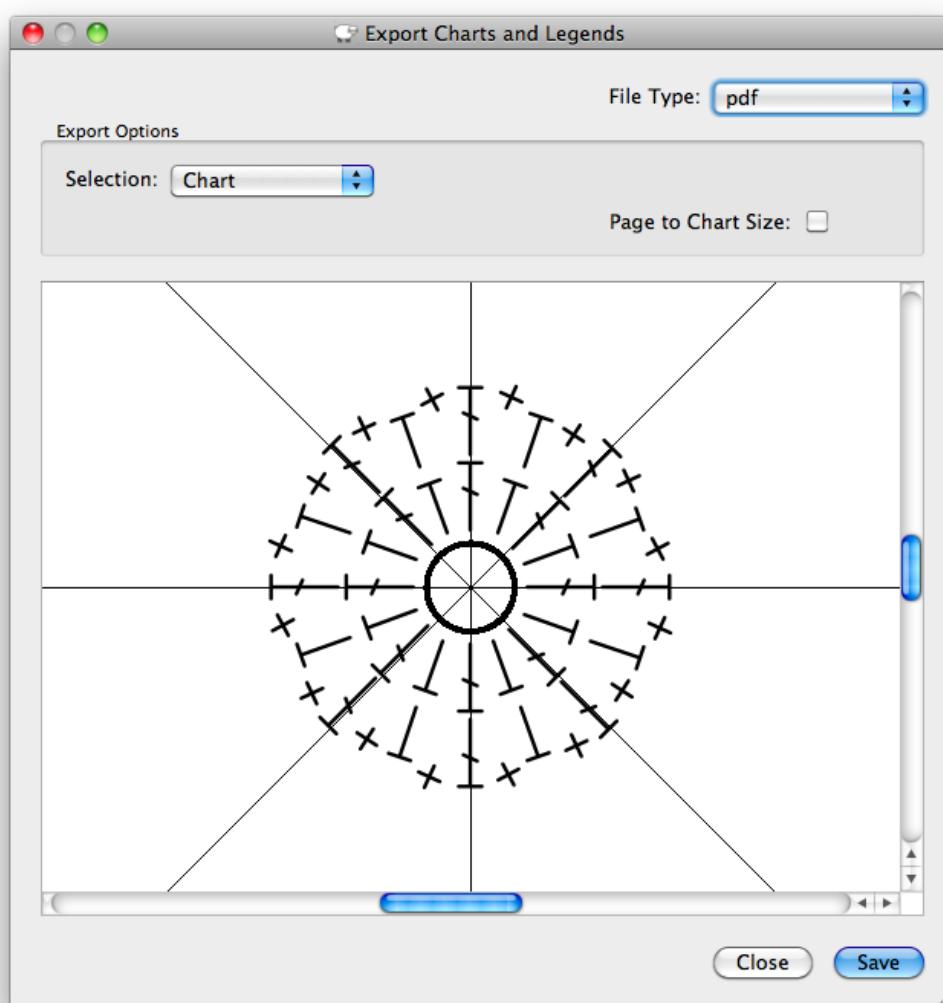
**Selection only**

Only the items you have currently selected will be exported. This is useful if you only want to export a certain part of your chart. Note that the rectangles shown around selected stitches will not be exported, so it looks just like exporting the whole chart.

**Height and Width**

Set the dimensions of the image to be generated. You should be aware that higher quality means larger file size, and that you should weigh that against your intended use of the file.

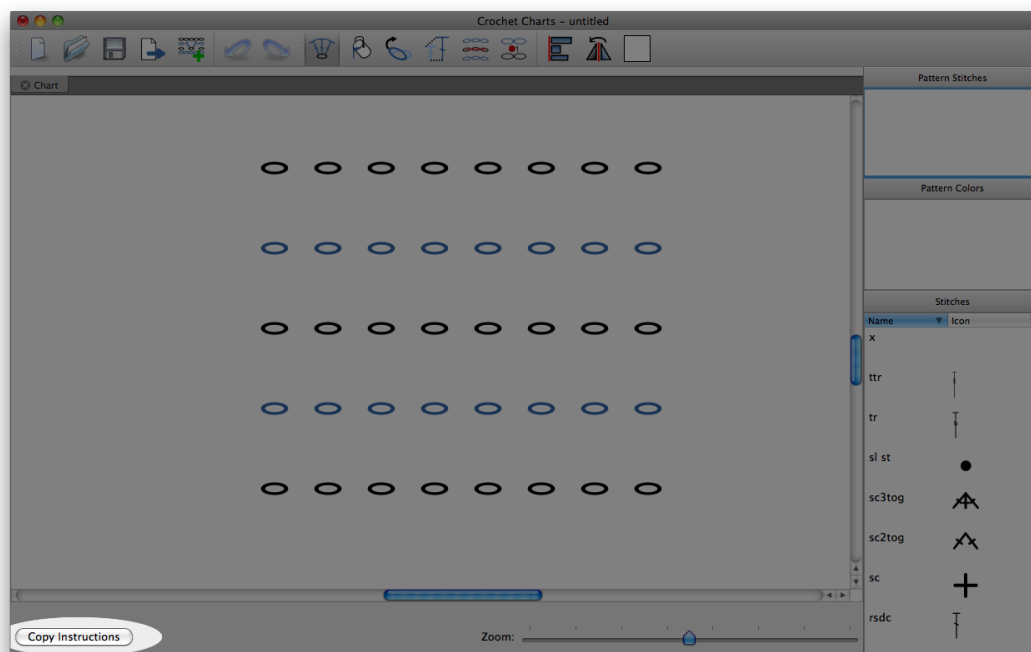
## Charts



*Options window for export a chart*

When you export a chart you are presented with the [standard options for all exports](#). You can choose the resolution, height, width, and page to chart size options depending on the file type you want to export to.

# Instructions



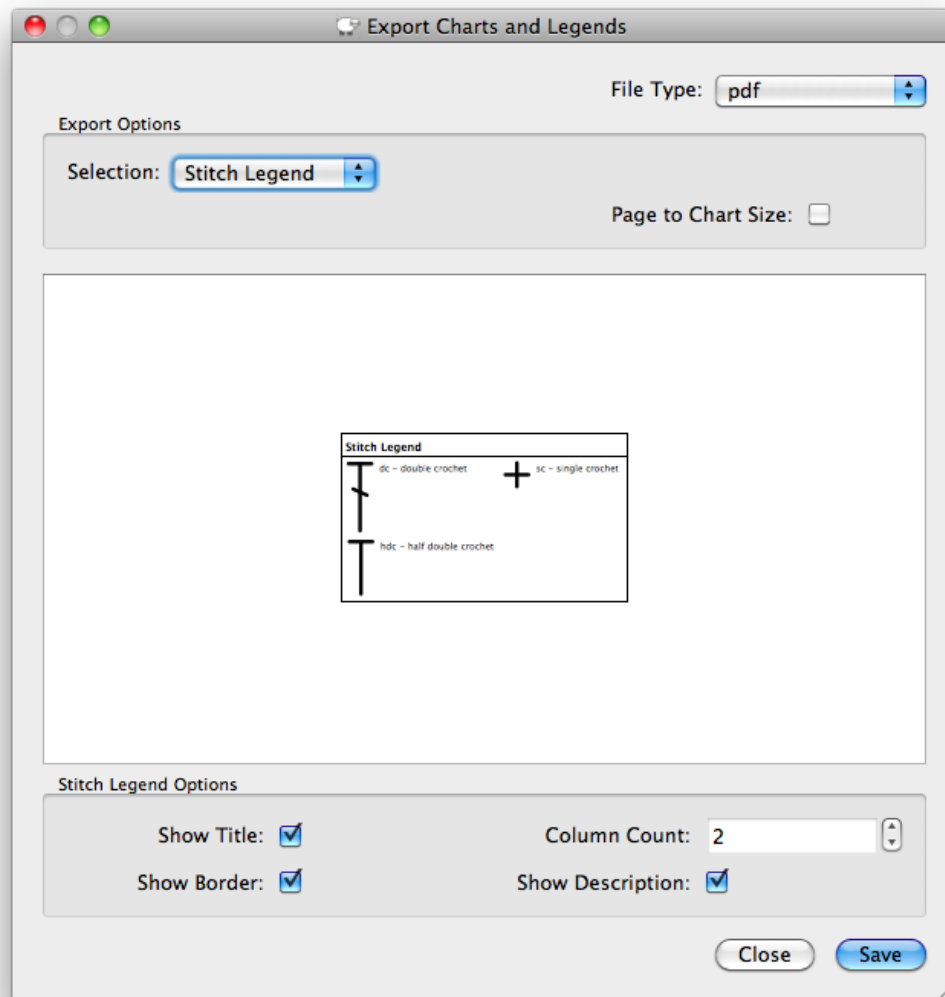
*The main window highlighting the **Copy Instructions** button*

From the main interface you can export the written instructions for the chart by pressing the **Copy Instructions** button on the bottom left of the application. This button will add the row numbers, capitalize the first letter, put a period at the end of the row, and generate repeats among other features. You can tell Crochet Charts that you don't want it to generate text repeats in the [Chart Options/Preferences](#), if you'd rather have every stitch written out. This cleaned up version of the written instructions will automatically be copied to the clipboard where you can then paste it directly into another application as plain text.

## Legends

Crochet Charts supports output of Stitch Legends, and Color Legends. These legends contain all the stitches or colors (respectively) used on all tabs in the document. The *Pattern Stitches* and *Pattern Colors* docks on the main interface give an interactive view of what the legends will contain.

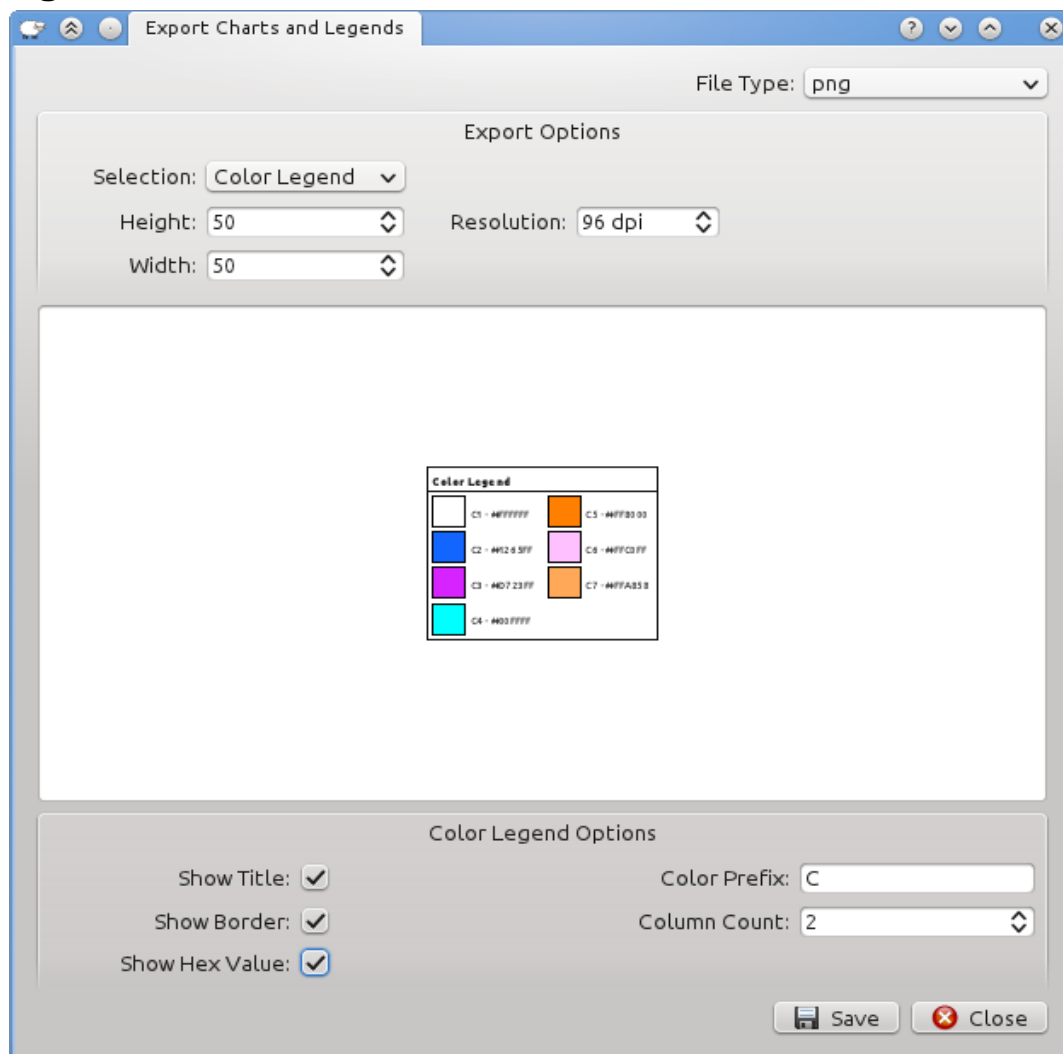
## Stitch Legends



*Options window for export a Stitch Legend*

When you export a stitch legend you are presented with the [standard export options](#) at the top of the dialog, and Stitch Legend specific options at the bottom. Those options include showing a title for the legend, showing a border around the legend, showing the stitch descriptions, and specifying the column count for the legend. If you have settings that you prefer and would like to see whenever you use the export dialog you can make them the defaults by setting them in the [Legend Options/Preferences](#).

## Color Legends

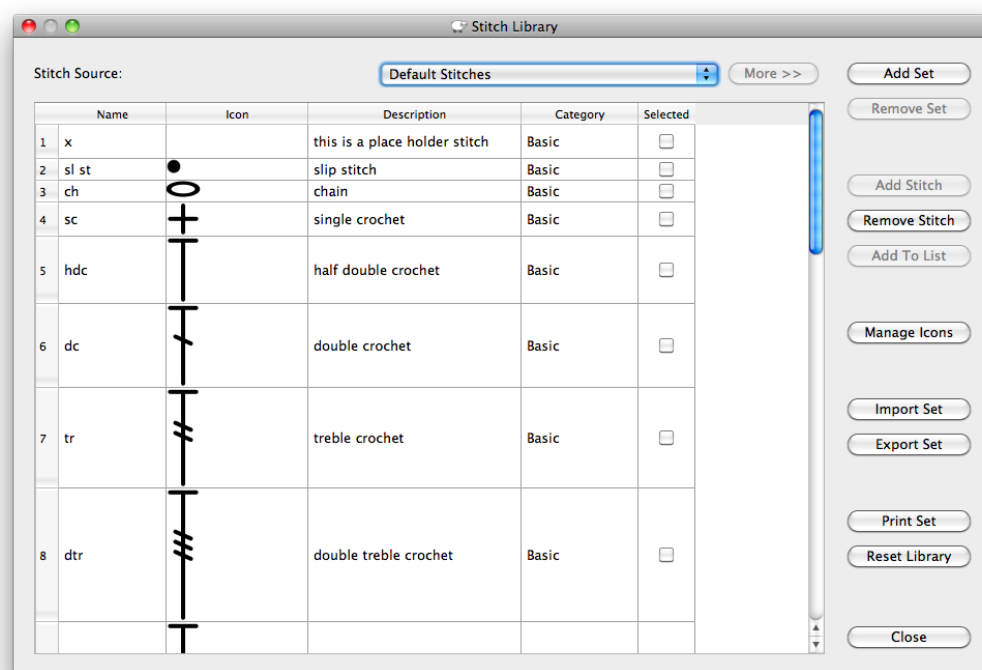


*The main window highlighting the **Copy Instructions** button*

When you export a stitch legend you are presented with the [standard export options](#) at the top of the dialog, and Color Legend specific options at the bottom. Those options include showing a title for the legend, showing a border around the legend, showing the hexadecimal value of the color (the standard representation of colors for the internet), user selected prefix for colors, and specifying the column count for the legend. If you have settings that you prefer and would like to see whenever you use the export dialog you can make them the defaults by setting them in the [Legend Options/Preferences](#).

# Chapter 7. Stitch Library

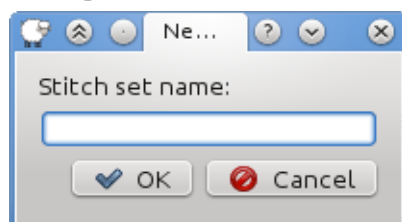
The Stitch Library can consist of multiple sets of stitches. Each stitch within a set must have a unique name, however you may have multiple sets that have a stitch with the same name in them. The *Default Stitches* set contains all the stitches that will appear in the main application for use on charts. You can customize this list however you want. Any stitches not in this list will not show up the *Stitches* list dock. The library loads the stitches as follows: first it loads the built in stitches, then it loads any additional sets you may have added, and finally it loads any customizations or changes you have made on top of the existing stitches.



*The main window of the Stitch Library*

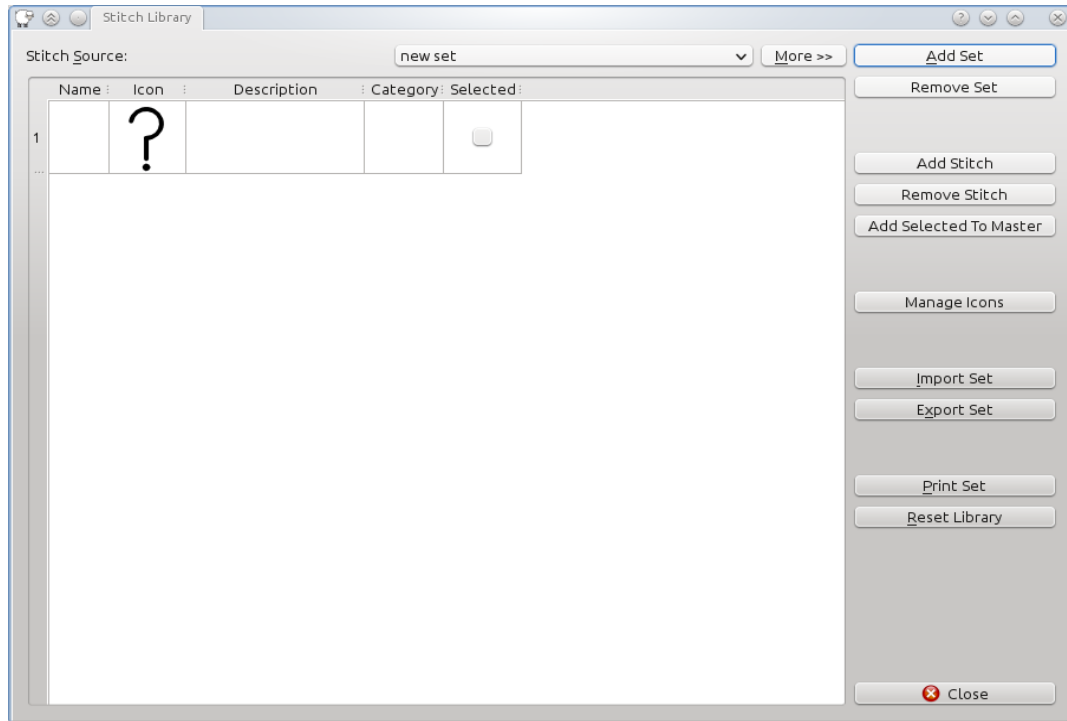
To open the Stitch Library goto **Tools** → **Stitch Library**. From here you can add and remove Stitches, Stitch Sets and Icons, print the set and reset the library to it's original state.

## Creating New Stitch Sets



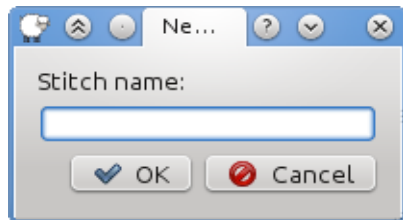
*The prompt for a new Stitch Set*

To create a new Stitch Set click on the **Add Set** button. You will be prompted to enter a set name. Once you have entered a new set name a new list will be loaded in the Stitch Library with a new stitch ready for editing. From this point you can [edit the stitch like normal](#) and add more stitches to the set. To use the new stitches on a chart you need to [add the stitches to the Default Stitches list](#).



*A new Stitch Set displayed in the library*

## Creating New Stitches



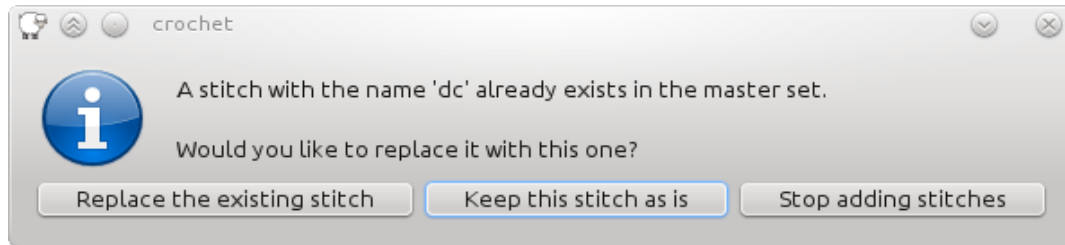
*The prompt for a new Stitch*

To create a new stitch click on the **Add Stitch** button and supply a new name for the stitch. You will then be dropped back to the Stitch Library with a new row added containing the name of the new stitch, and a question mark for an icon. To change any of the information about the stitch just click on each section. The Icon and Categories will open a drop down lists that you have to click on again to show you the options. If you want to add icons to the list of selections you can [add your own custom icons](#). If you've added the stitch to a new set and you want to use it to create charts you will need to [add the stitch to the Default Stitch list](#).

## Adding Stitches to the Default Stitches list

To use custom stitches to create charts you have to include the stitches in the Default Stitches list. To include your custom stitches check the "Selected" check box next to the stitch or stitches you wish to add and press the **Add To List** button.

The Default Stitches set like any stitch set in Crochet Charts can only have uniquely named stitches. If you try to include a stitch name that is already in the list you will be prompted to either replace the existing stitch, keep the original stitch as is, or stop adding stitches if you are adding more than one stitch.

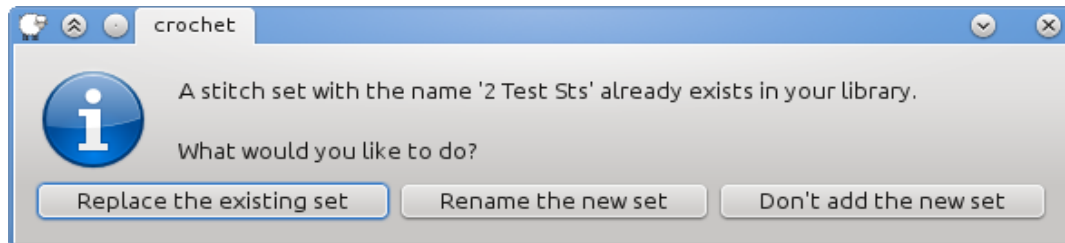


*You will be prompted if the stitch already exists*

## Importing / Exporting Stitch Sets

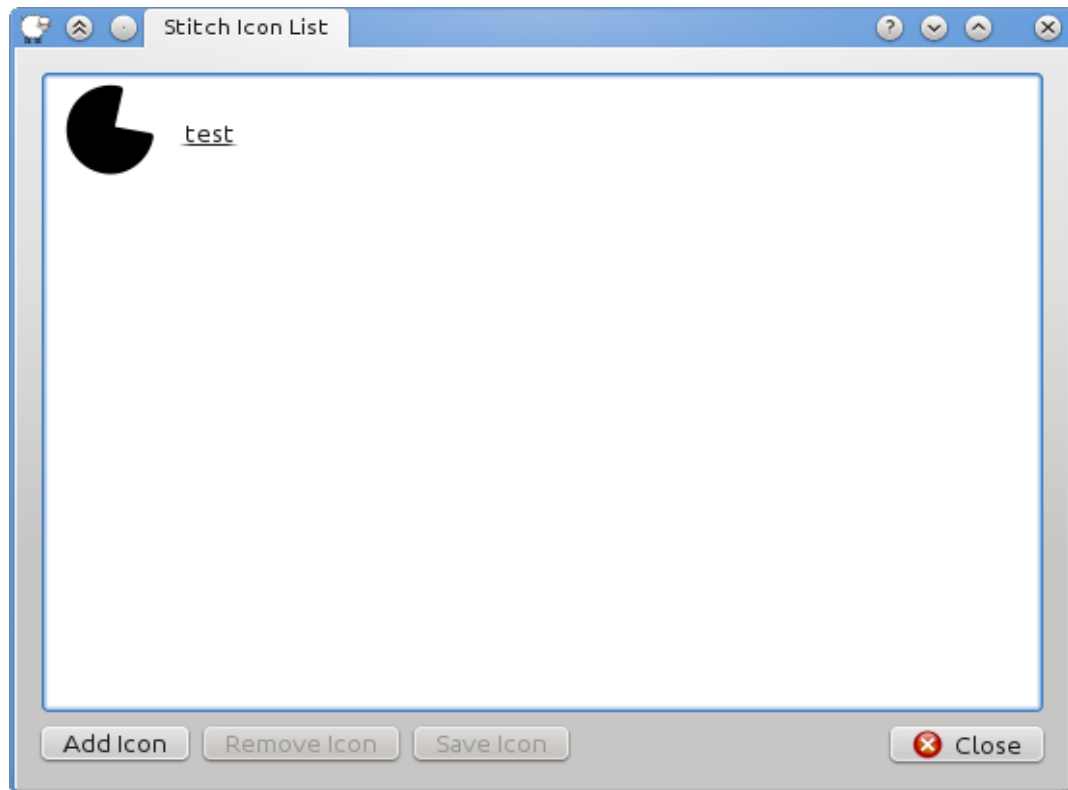
If you have a set of stitches that you want to share with your friends, co-workers, or others you can Export the set to a single file. To export the Stitch Set in the Stitch Library click on the **Export Set** button and you will be prompted to supply a file name. The currently displayed set will be exported into a single standalone file that other users of Crochet Charts can import and use themselves.

To import a set that someone has given you go into the Stitch Library and click on the **Import Set** button. You will be prompted to select the file you wish to import. If the name of the set conflicts with a set you already have in the library you will be prompted to give the set a new name, override the existing set, or to stop the import process.



*You will be prompted if the stitch already exists*

## Adding Custom Icons



### *Adding new icons*

To add custom icons click on the **Manage Icons** button in the [Stitch Library](#). This will take you to the Stitch Icon List where you can Add Icons, Remove Icons and Save Icons.

When you add an icon to the Stitch Library the software makes a copy of the icon so that you don't have to worry about moving or deleting the icons you've added. Removing the icon from the list deletes the copy. The *Save Icons* function allows you to saved a copy of the icon or icons and copy them to a useful location where you can make changes and they save them back into the library later. All of the functions for Managing the icons (Add Icons, Remove Icons, and Save Icons) can be used on groups of icons as well as individual icons.

## Tips on Creating Icons

To create icons for Crochet Charts you should use your favorite drawing program to create files in one of the following formats:

### **SVG, SVGZ**

Can have a transparent background and scales properly

### **PNG**

Can have a transparent background, but does not scale nicely

### **GIF**

Can have a transparent background, but does not scale nicely

### **JPG, JPEG**

Does not have a transparent background, and does not scale nicely



Transparent backgrounds are useful if you want to place color behind the stitches or if some of the stitches overlap. Proper scaling is good because it means that no matter how much you zoom in on the chart or scale up the stitches they will always look good.

it is recommended to use SVG file format when possible. SVG is not as well known a format as the others, but it is becoming an industry standard. Here are a few applications that can generate SVG files if you choose to use it: [Inkscape](#), [LibreOffice](#) Draw, [OpenOffice](#) Draw, [Google Docs](#), and [Adobe Illustrator](#).

We recommend starting with a canvas size of 32x32 px. If you need to use a different size it is recommended to change the size in increments of 16 or 32. So a single crochet is 32x32, a half double crochet is 32x64, and a double crochet is 32x80. Once you have the basic size you can modify it from there as needed.

If you want your stitches to match the default stitches I'm using a stroke width of 4.0 and rounded caps and joints. Also if you want the software to change the color of the stitches for alternate rows then the stitch you create should be black (#000000) any other colors in the stitch will not be modified.

If you use one of the other file types (png, gif) that support transparent background you should be aware that most drawing applications do not turn on transparency by default. You should consult the documentation for your application on the proper way to enable it.

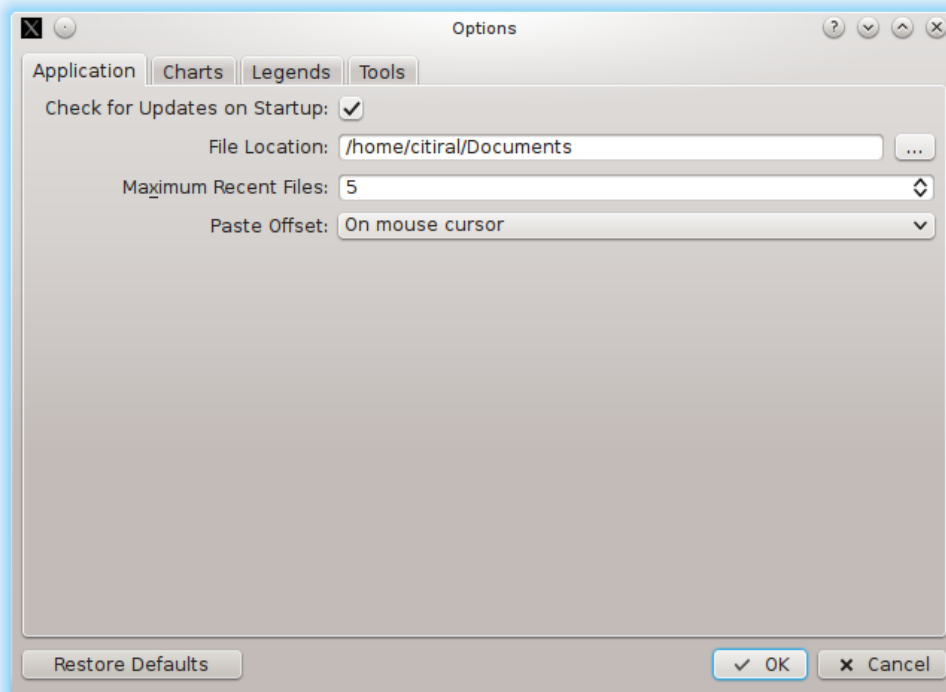
---

# Chapter 8. Options / Preferences

The options have been divided into sections. The first section contains the general application settings. The Charts section contains settings that effect the creation and layout of charts and their written instructions. The Legend section contains the default settings for generating stitch and color legends. The tools section contains settings that effect the functionality of tools. Usually, these settings can be overridden at the point at which they are used. For example, if you set default options on the Legends you can change them, temporarily, while you are on the **File** → **Export** dialog.

If you change the settings and you are unhappy with them you can always return the application to the default state by clicking the **Restore Defaults** button.

## Application



*The application options dialog*

### Check for Updates on Startup

Every time you start Crochet Charts it will attempt to connect to [www.StitchWorksSoftware.com](http://www.StitchWorksSoftware.com) to check for updates. If an update is found you will be prompted to download and install it. Even if this feature is disabled you can still check for updates manually by going to **Tools** → **Check for Updates**

### File Location

This is the default folder that opens when you go to load or save a file, an icon, or export a document.

### Maximum Recent Files

This option allows you to specify how many recent files to list in **File** → **Recent Files**.

**Paste Offset**

When copying and pasting, this option decides if the pasted stitches appear on top of or next to the copied stitches. If *on mouse cursor* is selected, the pasted objects will be centered on the mouse cursor.

## Charts



The chart options dialog

**Default Stitch**

The default stitch used when creating new *Rows* and *Rounds* chart. This option can be overridden when you create a new chart.

**Rows**

The default number of rows to create on new *Rows* or *Rounds* charts.

**Stitches**

The default number of stitches to create on a new *Rows* or *Rounds* chart.

**Show Chart Center**

Show the chart center symbol (a ring) on *Rounds* charts.

**Style**

The default chart style to use when creating a new chart. A *Blank* chart start with no stitches on the canvas. A *Rows* chart creates a grid of stitches on the canvas with *Row* rows and *Stitch* columns of stitches. A *Rounds* chart creates rounds of stitches on the canvas the first round contains *Stitch* stitches and each subsequent row contains an additional 12 stitches.

**Alternate row colors**

Use the Primary / Alternate colors to draw the stitches in each row.

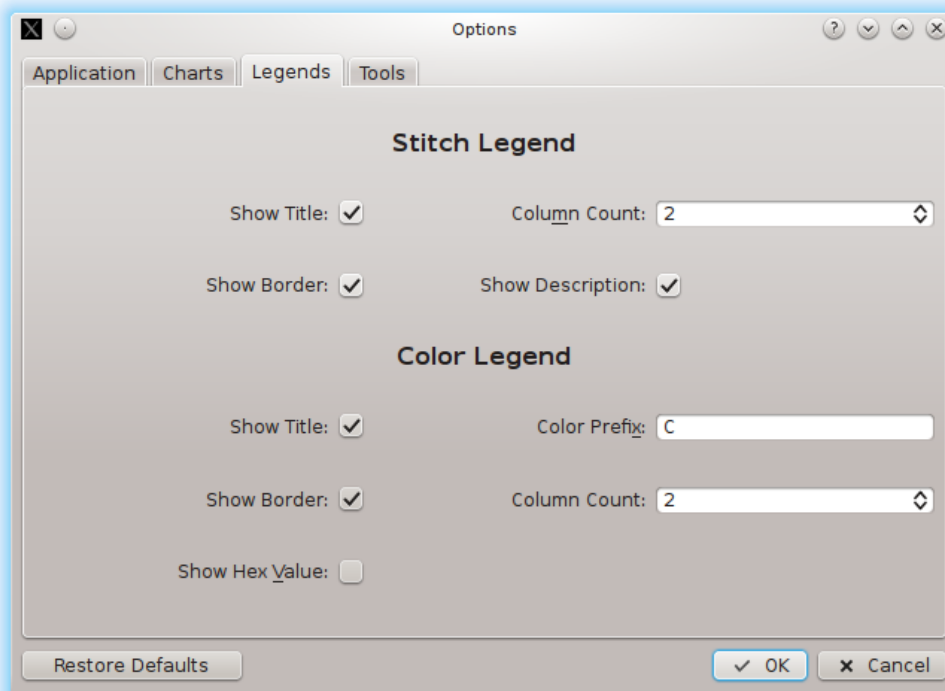
**Row indicator style**

Use either a number, a dot, or both to indicate anything you want on the chart. By default the indicator text will contain the current count of indicators on the chart.

**Indicator color**

The color to use for the indicator dot.

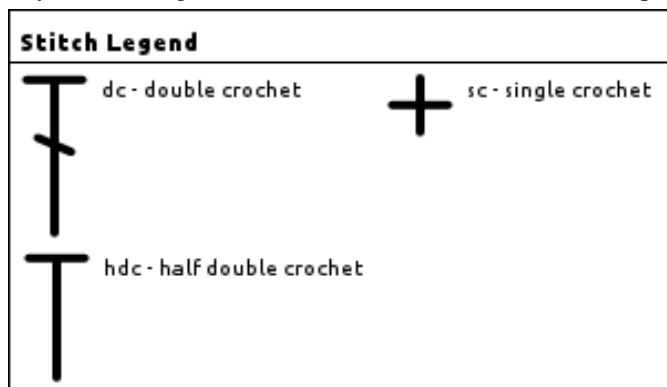
## Legends



*The legend options dialog*

## Stitch Legends

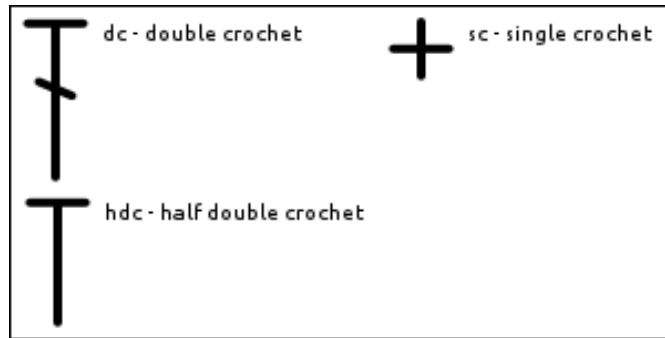
When exporting a Stitch Legend any of the options below can be used together to create the stitch legend of your choosing. These values can be overridden in the Export dialog.



*An example stitch legend with all options turned on and column count set to 2*

**Show Title**

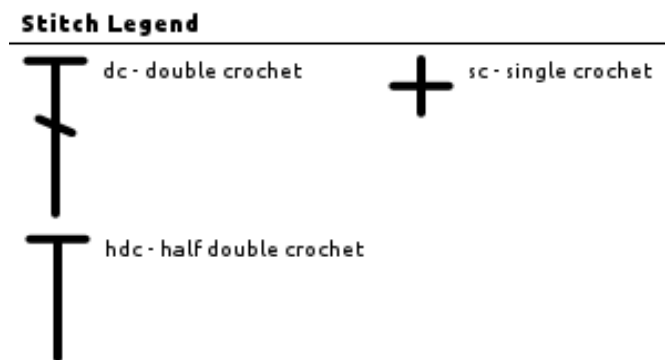
This will show the title block and the top of the legend.



*The stitch legend without the title*

### Show Border

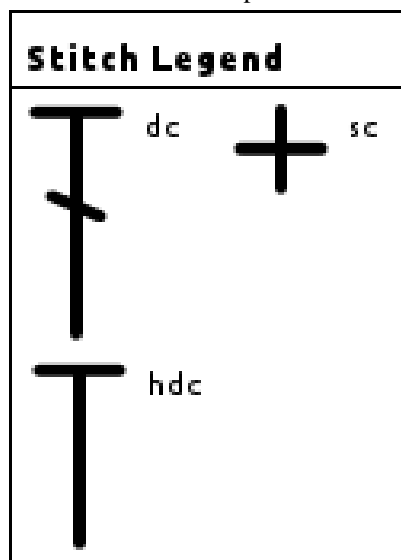
Show the border around the entire outside edge of the legend.



*Border turned off*

### Show Description




Show the stitch descriptions in the legend.






*A legend with the descriptions turned off*

### Column Count




This allows you to specify the number of columns in the legend. The software will try to fit the stitches into the columns evenly.

Stitch Legend		
	dc - double crochet	
		hdc - half double crochet
		
		sc - single crochet

*A legend with 3 columns*




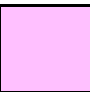



Stitch Legend	
	dc - double crochet
	hdc - half double crochet
	sc - single crochet

*A legend with 1 column*

	dc		hdc		sc
--	----	--	-----	--	----

*A legend with all options turned off*

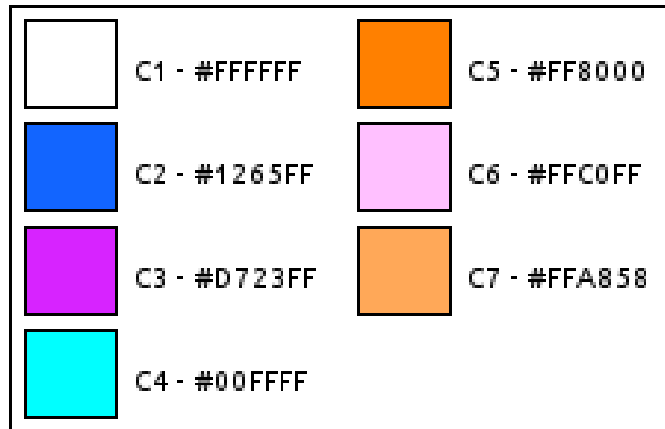
## Color Legends

Color Legend			
	C1 - #FFFFFF		C5 - #FF8000
	C2 - #1265FF		C6 - #FFC0FF
	C3 - #D723FF		C7 - #FFA858
	C4 - #00FFFF		

*An example color legend with all options turned on*

### Show Title

This will show the title block and the top of the legend.



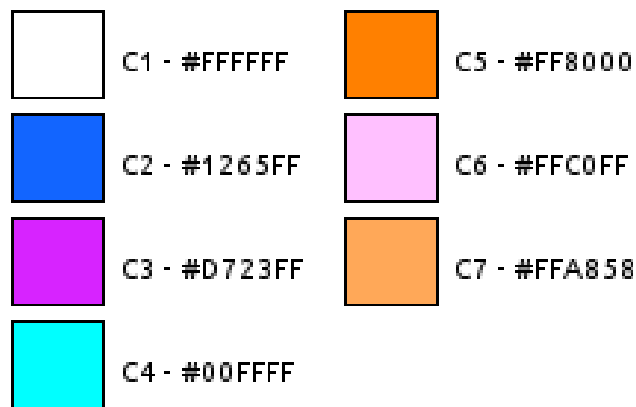
*A color legend without the title*

#### Show Border

Show the border around the entire outside edge of the legend.

#### Color Legend

---



*A color legend without border*

#### Show Hex Value








Show the hexadecimal (hex) value of the color. The hex value is a common standard for communicating colors on the internet.










*A color legend without hex values*

#### Color Prefix

The color prefix can be no characters or it can be multiple characters.

Color Legend			
	1 - #FFFFFF		5 - #FF8000
	2 - #1265FF		6 - #FFC0FF
	3 - #D723FF		7 - #FFA858
	4 - #00FFFF		








*A color legend with no prefix*

Color Legend			
	Color1 - #FFFFFF		Color5 - #FF8000
	Color2 - #1265FF		Color6 - #FFC0FF
	Color3 - #D723FF		Color7 - #FFA858
	Color4 - #00FFFF		

*A color legend with the word Color as a prefix*

### Column Count

This allows you to specify the number of columns in the legend. The software will try to create even columns.

Color Legend													
	C1 - #FFFFFF		C2 - #1265FF		C3 - #D723FF		C4 - #00FFFF		C5 - #FF8000		C6 - #FFC0FF		C7 - #FFA858

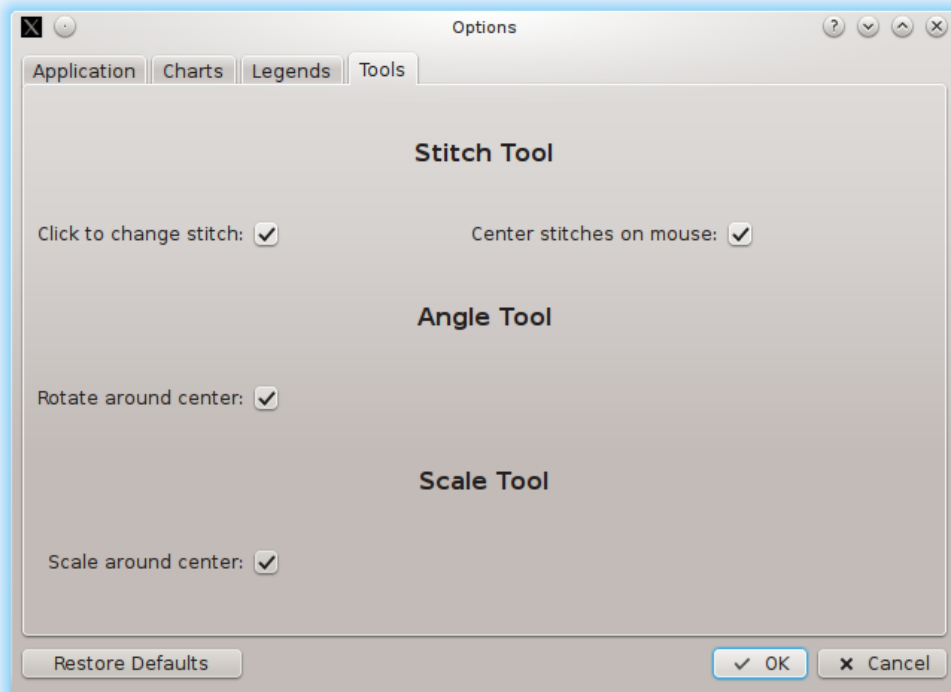
*A color legend with 7 columns*

	1		2		3		4		5		6		7
---	---	---	---	---	---	---	---	---	---	--	---	---	---

*A color legend with all the options turned off*



# Tools



*The tools options dialog*

## **Click to change stitch**

If enabled, clicking on another stitch with the stitch tool will change the type of that stitch.

## **Center stitch on mouse**

This option will center newly placed stitches on the mouse. If this is disabled, the upper-left most point of the stitch will be centered on the mouse.

## **Rotate around center**

Rotating stitches will use the center of the stitch or group as anchor, instead of the bottom-middle of the stitch or group.

## **Scale around center**

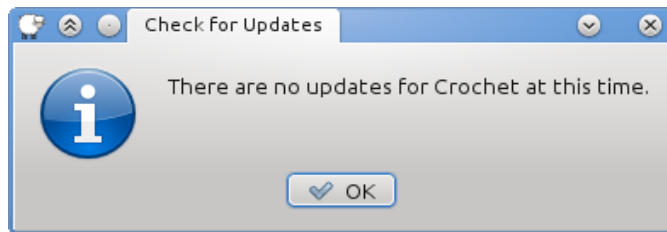
Scaling stitches will use the center of the stitch or group as anchor, instead of the bottom-middle of the stitch or group.

---

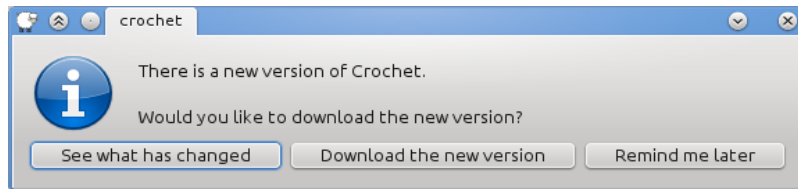
# Chapter 9. Miscellaneous

## Check for Updates

By default the software will silently check for updates every time you start the software. If it finds an update you will be prompted to install the new version. If you do not wish the software to check for update on startup you can disable this feature by going to the [Application Options/Preferences](#) and un-check the option for this feature.

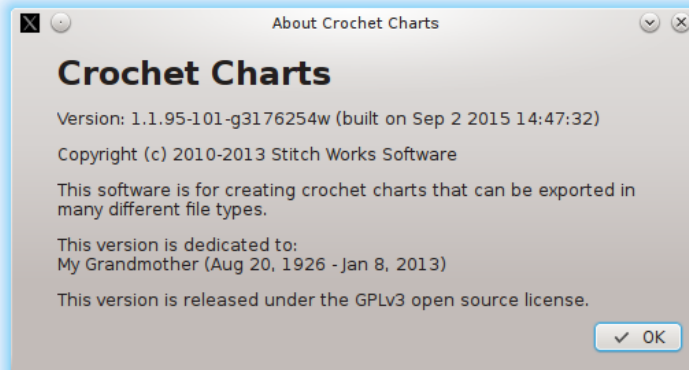


*The dialog when there are no updates*



*The dialog when a new version is available for download*

## About Crochet Charts



*The about this application dialog*

The About dialog can be accessed by going to the **Help** → **About Crochet Charts** option, or on the Mac by going to **Crochet Charts** → **About Crochet Charts**.

This dialog contains the full version string and build date, copyright notice, description, dedication and the GPL license information.

---

# Chapter 10. Limits on Use of Output

There are no limits on what you can do with the charts, or output you create in Crochet Charts. However we would appreciate it if you included a credit in any patterns, or publications where you used this software. For example: Charts created with Crochet Charts by Stitch Works Software.

---

# Chapter 11. Troubleshooting

## Bugs

If you find a defect, or unexpected behavior in this software please [contact us](#) so we can look into the issue. we take bugs and defects very seriously and the sooner we know about them the sooner we can fix them.

## Features

Is the software missing a feature? Do you have an idea that should be included in the software? You should [contact us](#) and let us know. we want this software to make creating charts easy for the users and the best way to do that is to have the users give us feedback about what is and isn't working for them.